

Anti-Di-Methyl-Histone H3-R2 antibody (Around R2) (STJ24011)

GENERAL INFORMATION

Product Type	Primary antibodies
Applications	WB/IF/ICC/ELISA
Host / Source	Rabbit
Reactivity	Human/Mouse/Rat/Other

PRODUCT PROPERTIES

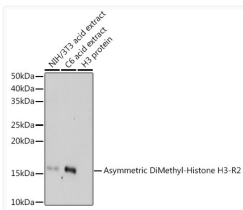
Clonality	Polyclonal
Concentration	Lot specific
Conjugation	Unconjugated
Purification	Affinity purification
Dilution Range	WB:1:100-1:500 IF/CC:1:50-1:200 ELISA:Recommended starting concentration is 1 Mu g/mL. Please optimize the concentration based on your specific assay requirements.
Formulation	PBS with 0.02% Sodium Azide, 50% Glycerol, pH 7.3.
Isotype	IgG
Molecular Weight	Protein Mw: 16kDa Observed Mw: 17kDa
Storage Instruction	Store at -20°C for up to 1 year from the date of receipt, and avoid repeat freeze-thaw cycles.

TARGET INFORMATION

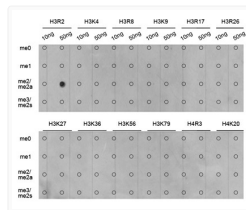
Gene ID	8350/8351/8352/8353/8354/8355/8356/8357/8358/8968/8290
Gene Symbol	H3C1.H3C2.H3C3.H3C4.H3C6.H3C7.H3C8.H3C10.H3C11.H3C12.H31_HUMAN H31T_HUMAN
Immunogen Region	Around R2
Immunogen Sequence	MARTK
Specificity	A synthetic asymmetric dimethylated peptide around R2 of human histone H3 (NP_003520.1).

ADDITIONAL INFORMATION

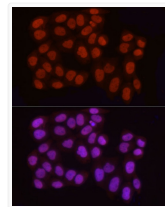
Note **STRICTLY FOR FURTHER SCIENTIFIC RESEARCH USE ONLY (RUO). MUST NOT TO BE USED IN DIAGNOSTIC OR THERAPEUTIC APPLICATIONS.**



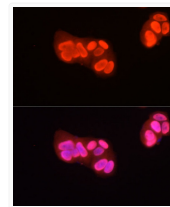
Western blot analysis of extracts of various cell lines, using Asymmetric DiMethyl-Histone H3-R2 antibody (STJ24011) at 1:500 dilution. Secondary antibody: HRP Goat Anti-rabbit IgG (H+L) (STJS000856) at 1:10000 dilution. Lysates/proteins: 25 Mu g per lane. Blocking buffer: 3% non-fat dry milk in TBST. Detection: ECL Enhanced Kit. Exposure time: 180s.



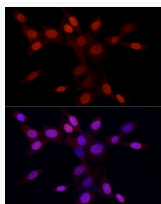
Dot-blot analysis of all sorts of methylation peptides using Asymmetric DiMethyl-Histone H3-R2 antibody (STJ24011).



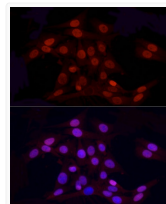
Immunofluorescence analysis of HeLa cells using Asymmetric DiMethyl-Histone H3-R2 rabbit polyclonal antibody (STJ24011) at dilution of 1:100 (40x lens). Blue: DAPI for nuclear staining.



Immunofluorescence analysis of MCF7 cells using Asymmetric DiMethyl-Histone H3-R2 rabbit polyclonal antibody (STJ24011) at dilution of 1:100 (40x lens). Blue: DAPI for nuclear staining.



Immunofluorescence analysis of NIH/3T3 cells using Asymmetric DiMethyl-Histone H3-R2 rabbit polyclonal antibody (STJ24011) at dilution of 1:100 (40x lens). Blue: DAPI for nuclear staining.



Immunofluorescence analysis of PC-12 cells using Asymmetric DiMethyl-Histone H3-R2 rabbit polyclonal antibody (STJ24011) at dilution of 1:100 (40x lens). Blue: DAPI for nuclear staining.