

## Anti-Tri-Methyl-Histone H3-K36 antibody (32-42) (STJ23992)

### GENERAL INFORMATION

Product Type	Primary antibodies
Applications	WB/DB/IHC-P/IF/ICC/ELISA/ChIP/ChIP-seq
Host / Source	Rabbit
Reactivity	Human/Mouse/Rat/Other

### PRODUCT PROPERTIES

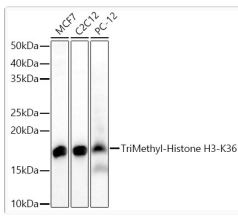
Clonality	Polyclonal
Concentration	Lot specific
Conjugation	Unconjugated
Purification	Affinity purification
Dilution Range	WB:1:500-1:1000 DB:1:500-1:2000 IHC-P:1:50-1:200 IF/ICC:1:50-1:200 ELISA:Recommended starting concentration is 1 Mu g/mL. Please optimize the concentration based on your specific assay requirements. ChIP:5 Mu g antibody for 5 Mu g
Formulation	PBS with 0.02% Sodium Azide, 50% Glycerol, pH 7.3.
Isotype	IgG
Molecular Weight	Protein Mw: 16kDa Observed Mw: 17kDa
Storage Instruction	Store at -20°C for up to 1 year from the date of receipt, and avoid repeat freeze-thaw cycles.

### TARGET INFORMATION

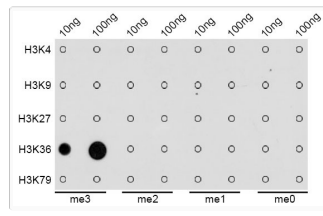
Gene ID	<a href="#">8350/8351/8352/8353/8354/8355/8356/8357/8358/89688290</a>
Gene Symbol	<a href="#">H3C1.H3C2.H3C3.H3C4.H3C6.H3C7.H3C8.H3C10.H3C11.H3C12</a> <a href="#">H31_HUMAN</a> <a href="#">H31T_HUMAN</a>
Immunogen Region	32-42
Immunogen Sequence	MARTKQTARKSTGGKAPRKQ LATKAARKSAPATGGVKKPH RYRPGTVALREIRRYQKSTE LLIRKLPFQRLVREIAQDFK TDLRFQSSAVMALQEACEAY
Specificity	A synthetic peptide corresponding to a sequence within amino acids 1-100 of human histone H3 (NP_003520.1).

### ADDITIONAL INFORMATION

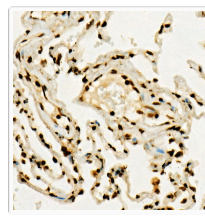
Note	STRICTLY FOR FURTHER SCIENTIFIC RESEARCH USE ONLY (RUO). MUST NOT TO BE USED IN DIAGNOSTIC OR THERAPEUTIC APPLICATIONS.
------	---



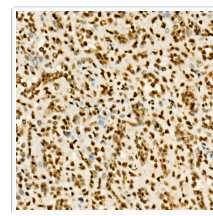
Western blot analysis of various lysates, using TriMethyl-Histone H3-K36 rabbit polyclonal antibody (STJ23992) at 1:400 dilution. Secondary antibody: HRP Goat Anti-rabbit IgG (H+L) (STJS000856) at 1:10000 dilution. Lysates/proteins: 25ug per lane. Blocking buffer: 3% non-fat dry milk in TBST. Detection: ECL Basic Kit. Exposure time: 60s.



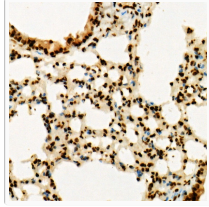
Dot-blot analysis of all sorts of methylation peptides using TriMethyl-Histone H3-K36 antibody (STJ23992).



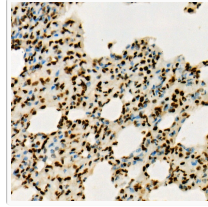
Immunohistochemistry analysis of paraffin-embedded human lung using TriMethyl-Histone H3-K36 rabbit polyclonal antibody (STJ23992) at dilution of 1:100 (40x lens). Perform high pressure antigen retrieval with 10 mM citrate buffer pH 6. 0 before commencing with immunohistochemistry staining protocol.



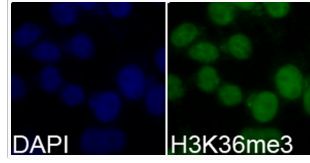
Immunohistochemistry analysis of paraffin-embedded human spleen using TriMethyl-Histone H3-K36 rabbit polyclonal antibody (STJ23992) at dilution of 1:100 (40x lens). Perform high pressure antigen retrieval with 10 mM citrate buffer pH 6. 0 before commencing with immunohistochemistry staining protocol.



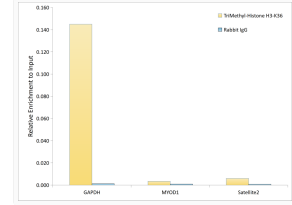
Immunohistochemistry analysis of paraffin-embedded mouse lung using TriMethyl-Histone H3-K36 rabbit polyclonal antibody (STJ23992) at dilution of 1:100 (40x lens). Perform high pressure antigen retrieval with 10 mM citrate buffer pH 6. 0 before commencing with immunohistochemistry staining protocol.



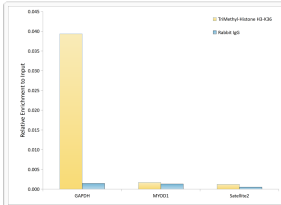
Immunohistochemistry analysis of paraffin-embedded rat lung using TriMethyl-Histone H3-K36 rabbit polyclonal antibody (STJ23992) at dilution of 1:100 (40x lens). Perform high pressure antigen retrieval with 10 mM citrate buffer pH 6. 0 before commencing with immunohistochemistry staining protocol.



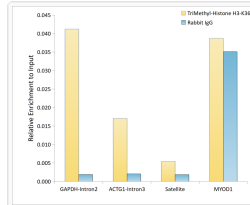
Immunofluorescence analysis of 293T cells using TriMethyl-Histone H3-K36 antibody (STJ23992). Blue: DAPI for nuclear staining.



Chromatin immunoprecipitation analysis of extracts of HeLa; cells, using TriMethyl-Histone H3-K36 rabbit polyclonal antibody (STJ23992) and rabbit IgG. The amount of immunoprecipitated DNA was checked by quantitative PCR. Histogram was constructed by the ratios of the immunoprecipitated DNA to the input.



Chromatin immunoprecipitation analysis of extracts of HeLa cells, using TriMethyl-Histone H3-K36 antibody (STJ23992) and rabbit IgG. The amount of immunoprecipitated DNA was checked by quantitative PCR. Histogram was constructed by the ratios of the immunoprecipitated DNA to the input.



Chromatin immunoprecipitation analysis of extracts of HeLa cells, using TriMethyl-Histone H3-K36 antibody (STJ23992) and rabbit IgG. The amount of immunoprecipitated DNA was checked by quantitative PCR. Histogram was constructed by the ratios of the immunoprecipitated DNA to the input.