

Anti-Tri-Methyl-Histone H3-K4 antibody (2-19) (STJ23983)

GENERAL INFORMATION

Product Type	Primary antibodies
Applications	WB/DB/IHC-P/ELISA/ChIP/ChIP-seq
Host / Source	Rabbit
Reactivity	Human/Mouse/Rat/Other

PRODUCT PROPERTIES

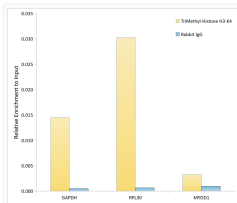
Clonality	Polyclonal
Concentration	Lot specific
Conjugation	Unconjugated
Purification	Affinity purification
Dilution Range	WB:1:100-1:500 DB:1:500-1:2000 IHC-P:1:50-1:200 ELISA:Recommended starting concentration is 1 Mu g/mL. Please optimize the concentration based on your specific assay requirements. ChIP:5 Mu g antibody for 5 Mu g-10 Mu g of Chromatin
Formulation	PBS with 0.09% Sodium Azide, 50% Glycerol, pH7.3.
Isotype	IgG
Molecular Weight	Protein Mw: 16kDa Observed Mw: 17kDa/
Storage Instruction	Store at-20°C for up to 1 year from the date of receipt, and avoid repeat freeze-thaw cycles.

TARGET INFORMATION

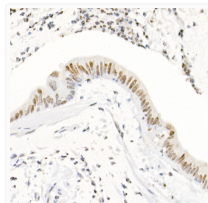
Gene ID	8350/8351/8352/8353/8354/8355/8356/8357/8358/89688290
Gene Symbol	H3C1.H3C2.H3C3.H3C4.H3C6.H3C7.H3C8.H3C10.H3C11.H3C12.H31_HUMAN H31T_HUMAN
Immunogen Region	2-19
Immunogen Sequence	MARTKQTARKSTGGKAPRKQ LATKAARKSAPATGGVKKPH RYRPGTVALREIRRYQKSTE LLIRKLPFQRLVREIAQDFK TDLRFQSSAVMALQEACEAY
Specificity	A synthetic peptide corresponding to a sequence within amino acids 1-100 of human histone H3 (NP_003520.1).

ADDITIONAL INFORMATION

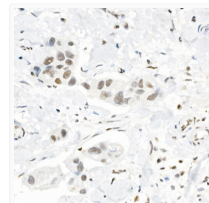
Note STRICTLY FOR FURTHER SCIENTIFIC RESEARCH USE ONLY (RUO). MUST NOT TO BE USED IN DIAGNOSTIC OR THERAPEUTIC APPLICATIONS.



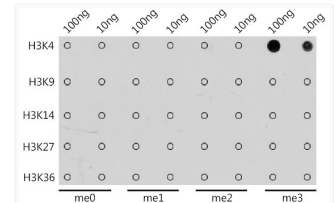
Chromatin immunoprecipitation analysis of extracts of 293F cells, using TriMethyl-Histone H3-K4 Rabbit polyclonal antibody (STJ23983) and rabbit IgG. The amount of immunoprecipitated DNA was checked by quantitative PCR. Histogram was constructed by the ratios of the immunoprecipitated DNA to the input.



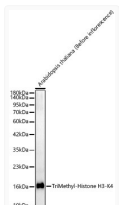
Immunohistochemistry analysis of TriMethyl-Histone H3-K4 in paraffin-embedded human carcinoma using TriMethyl-Histone H3-K4 Rabbit polyclonal antibody (STJ23983) at dilution of 1:20 (40x lens). Perform high pressure antigen retrieval with 10 mM citrate buffer pH 6. 0 before commencing with immunohistochemistry staining protocol.



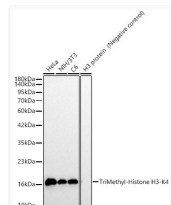
Immunohistochemistry analysis of TriMethyl-Histone H3-K4 in paraffin-embedded human breast cancer using TriMethyl-Histone H3-K4 Rabbit polyclonal antibody (STJ23983) at dilution of 1:20 (40x lens). Perform high pressure antigen retrieval with 10 mM citrate buffer pH 6. 0 before commencing with immunohistochemistry staining protocol.



Dot-blot analysis of all sorts of methylation peptides using TriMethyl-Histone H3-K4 antibody (STJ23983) at 1:1000 dilution.



Western blot analysis of *Arabidopsis thaliana* (Before inflorescence), using TriMethyl-Histone H3-K4 Rabbit polyclonal antibody (STJ23983) at 1:400 dilution. Secondary antibody: HRP Goat Anti-Rabbit IgG (H+L) (STJS000856) at 1:10000 dilution. Lysates/proteins: 25ug per lane. Blocking buffer: 3% nonfat dry milk in TBST. Detection: ECL Basic Kit. Exposure time: 90s.



Western blot analysis of various lysates, using TriMethyl-Histone H3-K4 Rabbit polyclonal antibody (STJ23983) at 1:400 dilution. Secondary antibody: HRP Goat Anti-Rabbit IgG (H+L) (STJS000856) at 1:10000 dilution. Lysates/proteins: 25ug per lane. Blocking buffer: 3% nonfat dry milk in TBST. Detection: ECL Basic Kit. Exposure time: 90s.