

Anti-Mono-Methyl-Histone H3-K4 antibody (STJ23981)

GENERAL INFORMATION

Product Type	Primary antibodies
Applications	WB/IHC-P/IF/ICC/ELISA/ChIP/ChIP-seq
Host / Source	Rabbit
Reactivity	Human/Mouse/Rat/Other

PRODUCT PROPERTIES

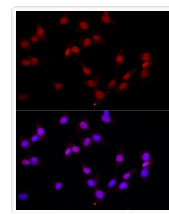
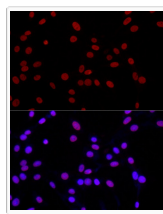
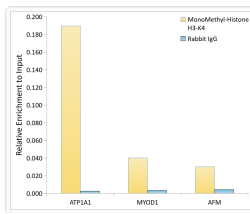
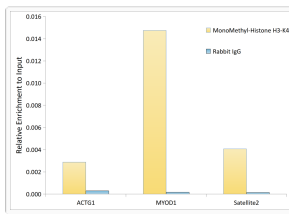
Clonality	Polyclonal
Concentration	Lot specific
Conjugation	Unconjugated
Purification	Affinity purification
Dilution Range	WB:1:500-1:1000 IHC-P:1:50-1:200 IF/CC:1:50-1:200 ELISA:Recommended starting concentration is 1 Mu g/mL. Please optimize the concentration based on your specific assay requirements. ChIP:5 Mu g antibody for 5 Mu g-10 Mu g of Chromati
Formulation	PBS with 0.01% Thimerosal, 50% Glycerol, pH 7.3.
Isotype	IgG
Molecular Weight	Protein Mw: 16kDa Observed Mw: 17kDa
Storage Instruction	Store at-20°C for up to 1 year from the date of receipt, and avoid repeat freeze-thaw cycles.

TARGET INFORMATION

Gene ID	8350/8351/8352/8353/8354/8355/8356/8357/8358/89688290
Gene Symbol	H3C1.H3C2.H3C3.H3C4.H3C6.H3C7.H3C8.H3C10.H3C11.H3C12 H31_HUMAN H31T_HUMAN
Immunogen Sequence	RTKQT
Specificity	A synthetic monomethylated peptide around K4 of human histone H3 (NP_003520.1).

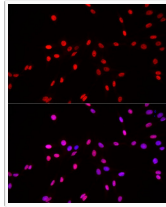
ADDITIONAL INFORMATION

Note	STRICTLY FOR FURTHER SCIENTIFIC RESEARCH USE ONLY (RUO). MUST NOT TO BE USED IN DIAGNOSTIC OR THERAPEUTIC APPLICATIONS.
------	---

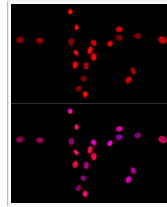


Chromatin immunoprecipitation analysis of extracts of HeLa cells, using MonoMethyl-Histone H3-K4 antibody (STJ23981) and rabbit IgG. The amount of immunoprecipitated DNA was checked by quantitative PCR. Histogram was constructed by the ratios of the immunoprecipitated DNA to the input.

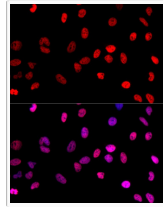
Chromatin immunoprecipitation analysis of extracts of HeLa cells, using MonoMethyl-Histone H3-K4 Rabbit polyclonal antibody (STJ23981) and rabbit IgG. The amount of immunoprecipitated DNA was checked by quantitative PCR. Histogram was constructed by the ratios of the immunoprecipitated DNA to the input.



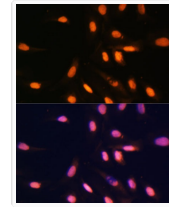
Immunofluorescence analysis of PC-12 cells using MonoMethyl-Histone H3-K4 Rabbit polyclonal antibody (STJ23981) at dilution of 1:20 (40x lens). Secondary antibody: Cy3 Goat Anti-Rabbit IgG (H+L) at 1:500 dilution. Blue: DAPI for nuclear staining.



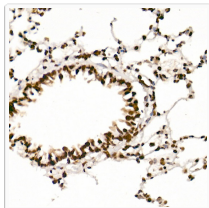
Immunofluorescence analysis of NIH/3T3 cells using MonoMethyl-Histone H3-K4 Rabbit polyclonal antibody (STJ23981) at dilution of 1:20 (40x lens). Secondary antibody: Cy3 Goat Anti-Rabbit IgG (H+L) at 1:500 dilution. Blue: DAPI for nuclear staining.



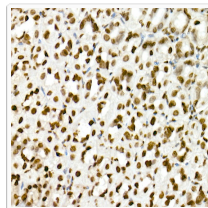
Immunofluorescence analysis of HeLa cells using MonoMethyl-Histone H3-K4 Rabbit polyclonal antibody (STJ23981) at dilution of 1:20 (40x lens). Secondary antibody: Cy3 Goat Anti-Rabbit IgG (H+L) at 1:500 dilution. Blue: DAPI for nuclear staining.



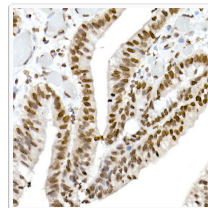
Immunofluorescence analysis of U-2 OS cells using MonoMethyl-Histone H3-K4 Rabbit polyclonal antibody (STJ23981) at dilution of 1:100. Secondary antibody: Cy3 Goat Anti-Rabbit IgG (H+L) at 1:500 dilution. Blue: DAPI for nuclear staining.



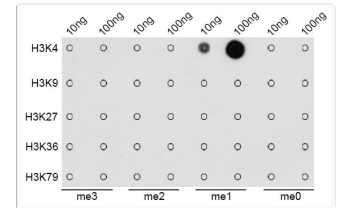
Immunohistochemistry analysis of MonoMethyl-Histone H3-K4 in paraffin-embedded rat lung using MonoMethyl-Histone H3-K4 Rabbit polyclonal antibody (STJ23981) at dilution of 1:200 (40x lens). Perform high pressure antigen retrieval with 10 mM citrate buffer pH 6.0 before commencing with immunohistochemistry staining protocol.



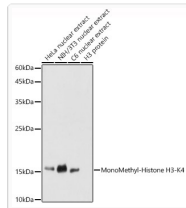
Immunohistochemistry analysis of MonoMethyl-Histone H3-K4 in paraffin-embedded mouse stomach using MonoMethyl-Histone H3-K4 Rabbit polyclonal antibody (STJ23981) at dilution of 1:200 (40x lens). Perform high pressure antigen retrieval with 10 mM citrate buffer pH 6.0 before commencing with immunohistochemistry staining protocol.



Immunohistochemistry analysis of MonoMethyl-Histone H3-K4 in paraffin-embedded human colon carcinoma using MonoMethyl-Histone H3-K4 Rabbit polyclonal antibody (STJ23981) at dilution of 1:200 (40x lens). Perform high pressure antigen retrieval with 10 mM citrate buffer pH 6.0 before commencing with immunohistochemistry staining protocol.



Dot-blot analysis of all sorts of methylation peptides using MonoMethyl-Histone H3-K4 antibody (STJ23981).



Western blot analysis of various lysates using MonoMethyl-Histone H3-K4 Rabbit polyclonal antibody (STJ23981) at 1:1000 dilution. Secondary antibody: HRP Goat Anti-Rabbit IgG (H+L) (STJS000856) at 1:10000 dilution. Lysates/proteins: 25 Mu g per lane. Blocking buffer: 3% nonfat dry milk in TBST. Detection: ECL Basic Kit. Exposure time: 5s.