

## Anti-Tri-Methyl-Histone H4-K20 antibody (STJ23972)

### GENERAL INFORMATION

Product Type	Primary antibodies
Applications	WB/DB/IHC-P/IF/ICC/ELISA
Host / Source	Rabbit
Reactivity	Human/Mouse/Rat/Other

### PRODUCT PROPERTIES

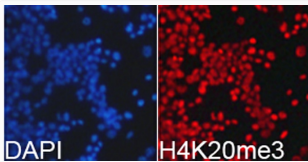
Clonality	Polyclonal
Concentration	Lot specific
Conjugation	Unconjugated
Purification	Affinity purification
Dilution Range	WB:1:500-1:2000 DB:1:500-1:2000 IHC-P:1:50-1:200 IF/ICC:1:50-1:200 ELISA:Recommended starting concentration is 1 µg/mL. Please optimize the concentration based on your specific assay requirements.
Formulation	PBS with 0.02% Sodium Azide, 50% Glycerol, pH 7.3.
Isotype	IgG
Molecular Weight	Protein Mw: 11kDa Observed Mw: 11kDa
Storage Instruction	Store at -20°C for up to 1 year from the date of receipt, and avoid repeat freeze-thaw cycles.

### TARGET INFORMATION

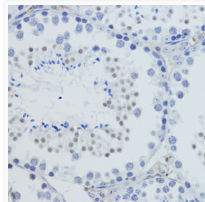
Gene ID	<a href="#">121504/554313/8294/8359/8360/8361/8362/8363/8364/8365/8366/8367/8368/8370</a>
Gene Symbol	<a href="#">H4C1.H4C2.H4C3.H4C4.H4C5.H4C6.H4C8.H4C9.H4C11.H4C12.H4C13.H4C14.H4C15.H4C16</a>
UniProt ID	<a href="#">H4_HUMAN</a>
Immunogen Sequence	HRKVL
Specificity	A synthetic trimethylated peptide around K20 of human histone H4 (NP_003529.1).

### ADDITIONAL INFORMATION

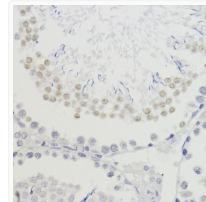
Note STRICTLY FOR FURTHER SCIENTIFIC RESEARCH USE ONLY (RUO). MUST NOT TO BE USED IN DIAGNOSTIC OR THERAPEUTIC APPLICATIONS.



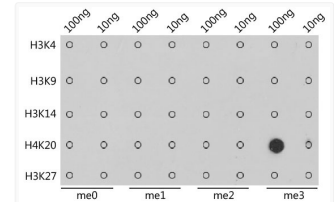
Immunofluorescence analysis of 293T cells using TriMethyl-Histone H4-K20 Rabbit polyclonal antibody (STJ23972). Blue: DAPI for nuclear staining.



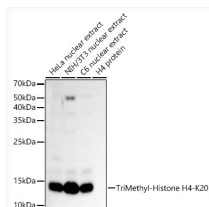
Immunohistochemistry analysis of TriMethyl-Histone H4-K20 in paraffin-embedded mouse testis using TriMethyl-Histone H4-K20 Rabbit polyclonal antibody (STJ23972) at dilution of 1:200 (40x lens). Perform microwave antigen retrieval with 10 mM PBS buffer pH 7.2 before commencing with immunohistochemistry staining protocol.



Immunohistochemistry analysis of TriMethyl-Histone H4-K20 in paraffin-embedded rat testis using TriMethyl-Histone H4-K20 Rabbit polyclonal antibody (STJ23972) at dilution of 1:200 (40x lens). Perform microwave antigen retrieval with 10 mM PBS buffer pH 7.2 before commencing with immunohistochemistry staining protocol.



Dot-blot analysis of all sorts of methylation peptides using TriMethyl-Histone H4-K20 antibody (STJ23972).



Western blot analysis of various lysates, using TriMethyl-Histone H4-K20 Rabbit polyclonal antibody (STJ23972) at 1:400 dilution. Secondary antibody: HRP Goat Anti-Rabbit IgG (H+L) (STJS000856) at 1:10000 dilution. Lysates/proteins: 25 µg per lane. Blocking buffer: 3% nonfat dry milk in TBST. Detection: ECL Basic Kit. Exposure time: 60s.