

## Anti-HDAC1 antibody (393-482) (STJ23928)

### GENERAL INFORMATION

Product Type	Primary antibodies
Applications	WB/IHC-P/IF/ICC/IP/ELISA
Host / Source	Rabbit
Reactivity	Human/Mouse/Rat

### PRODUCT PROPERTIES

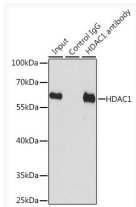
Clonality	Polyclonal
Concentration	Lot specific
Conjugation	Unconjugated
Purification	Affinity purification
Dilution Range	WB:1:500-1:1000 IHC-P:1:50-1:200 IF/CC:1:50-1:100 IP:0.5 Mu g-4 Mu g antibody for 200 Mu g-400 Mu g extracts of whole cells ELISA:Recommended starting concentration is 1 Mu g/mL. Please optimize the concentration based on your specif
Formulation	PBS with 0.02% Sodium Azide, 50% Glycerol, pH 7.3.
Isotype	IgG
Molecular Weight	Protein Mw: 55kDa Observed Mw: 62kDa/
Storage Instruction	Store at-20°C for up to 1 year from the date of receipt, and avoid repeat freeze-thaw cycles.

### TARGET INFORMATION

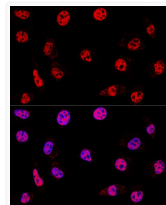
Gene ID	<a href="#">3065</a>
Gene Symbol	<a href="#">HDAC1</a>
UniProt ID	<a href="#">HDAC1_HUMAN</a>
Immunogen Region	393-482
Immunogen Sequence	SGDEDEDDPDKRISICSSDK RIACEEEFSDSEEEEGEGGRK NSSNFKKAKRVKTEDEKEKD PEEKKEVTETEEKTKEEKPEA KGVKKEVKLA
Specificity	Recombinant fusion protein containing a sequence corresponding to amino acids 393-482 of human HDAC1 (NP_004955.2).

### ADDITIONAL INFORMATION

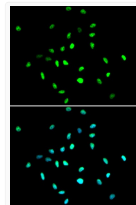
Note STRICTLY FOR FURTHER SCIENTIFIC RESEARCH USE ONLY (RUO). MUST NOT TO BE USED IN DIAGNOSTIC OR THERAPEUTIC APPLICATIONS.



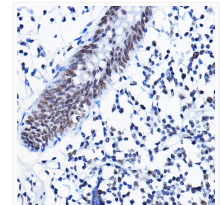
Immunoprecipitation analysis of 200 Mu g extracts of HT-29 cells, using 3 Mu g [KD Validated] HDAC1 Rabbit polyclonal antibody (STJ23928). Western blot was performed from the immunoprecipitate using HDAC1 antibody (STJ23928) at a dilution of 1:1000.



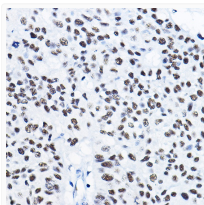
Confocal immunofluorescence analysis of L929 cells using [KD Validated] HDAC1 Rabbit polyclonal antibody (STJ23928) at dilution of 1:200. Blue: DAPI for nuclear staining.



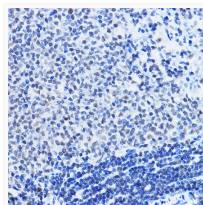
Immunofluorescence analysis of A549 cells using [KD Validated] HDAC1 Rabbit polyclonal antibody (STJ23928). Secondary antibody: Cy3 Goat Anti-Rabbit IgG (H+L) at 1:500 dilution. Blue: DAPI for nuclear staining.



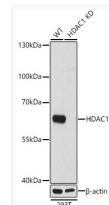
Immunohistochemistry analysis of HDAC1 in paraffin-embedded human colon using [KD Validated] HDAC1 Rabbit polyclonal antibody (STJ23928) at dilution of 1:50 (40x lens). Perform high pressure antigen retrieval with 10 mM citrate buffer pH 6.0 before commencing with immunohistochemistry staining protocol.



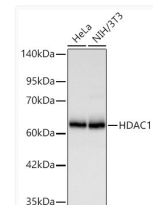
Immunohistochemistry analysis of HDAC1 in paraffin-embedded human lung cancer using [KD Validated] HDAC1 Rabbit polyclonal antibody (STJ23928) at dilution of 1:50 (40x lens). Perform high pressure antigen retrieval with 10 mM citrate buffer pH 6.0 before commencing with immunohistochemistry staining protocol.



Immunohistochemistry analysis of HDAC1 in paraffin-embedded rat spleen using [KD Validated] HDAC1 Rabbit polyclonal antibody (STJ23928) at dilution of 1:50 (40x lens). Perform high pressure antigen retrieval with 10 mM citrate buffer pH 6.0 before commencing with immunohistochemistry staining protocol.



Western blot analysis of lysates from wild type (WT) and HDAC1 knockdown (KD) 293T cells, using [KD Validated] HDAC1 Rabbit polyclonal antibody (STJ23928) at 1:1000 dilution. Secondary antibody: HRP Goat Anti-Rabbit IgG (H+L) (STJS000856) at 1:10000 dilution. Lysates/proteins: 25 Mu g per lane. Blocking buffer: 3% nonfat dry milk in TBST. Detection: ECL Basic Kit. Exposure time: 1s.



Western blot analysis of various lysates using [KD Validated] HDAC1 Rabbit polyclonal antibody (STJ23928) at 1:2000 dilution incubated at room temperature for 1.5 hours. Secondary antibody: HRP-conjugated Goat anti-Rabbit IgG (H+L) (STJS000856) at 1:10000 dilution. Lysates/proteins: 25 Mu g per lane. Blocking buffer: 3% nonfat dry milk in TBST. Detection: ECL Basic Kit. Exposure time: 20 s.