

Anti-HCLS1 antibody (1-280) (STJ23925)

GENERAL INFORMATION

Product Type	Primary antibodies
Applications	WB/IHC-P/ELISA
Host / Source	Rabbit
Reactivity	Human/Mouse

PRODUCT PROPERTIES

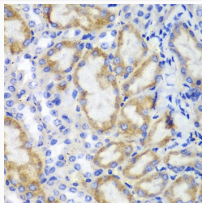
Clonality	Polyclonal
Concentration	Lot specific
Conjugation	Unconjugated
Purification	Affinity purification
Dilution Range	WB:1:500-1:2000 IHC-P:1:50-1:200 ELISA:Recommended starting concentration is 1 µg/mL. Please optimize the concentration based on your specific assay requirements.
Formulation	PBS with 0.02% Sodium Azide, 50% Glycerol, pH 7.3.
Isotype	IgG
Molecular Weight	Protein Mw: 54kDa Observed Mw: 72kDa
Storage Instruction	Store at -20°C for up to 1 year from the date of receipt, and avoid repeat freeze-thaw cycles.

TARGET INFORMATION

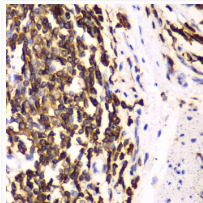
Gene ID	3059
Gene Symbol	HCLS1
UniProt ID	HCLS1_HUMAN
Immunogen Region	1-280
Immunogen Sequence	MWKSVVGHDSVSVETQGDD WDTDPDFVNDISEKEQRWGA KTIEGSGRTEHINIHLRNK VSEEHDLRKKEMESGPKAS HGYGGFRFGVERDRMDKSAVG HEYVAEVEKHSSQTDAAKGF GGKYGVERDRADKSAVGFYD KGEVEKHTSQKDYSRGFGGR YGVEKDKWDKALGYDYKGE TEKHESQRDYAKGFGGQYGI QKDRVDKSAVGFNEMEAPTT AYKKTTPIEAASSGTRGLK
Specificity	Recombinant fusion protein containing a sequence corresponding to amino acids 1-280 of human HCLS1 (NP_005326.2).

ADDITIONAL INFORMATION

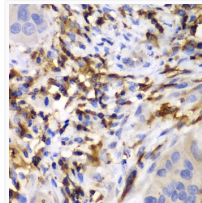
Note **STRICTLY FOR FURTHER SCIENTIFIC RESEARCH USE ONLY (RUO). MUST NOT TO BE USED IN DIAGNOSTIC OR THERAPEUTIC APPLICATIONS.**



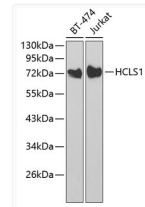
Immunohistochemistry analysis of paraffin-embedded mouse kidney using HCLS1 antibody (STJ23925) at dilution of 1:100 (40x lens). Perform microwave antigen retrieval with 10 mM PBS buffer pH 7.2 before commencing with immunohistochemistry staining protocol.



Immunohistochemistry analysis of paraffin-embedded human esophagus using HCLS1 antibody (STJ23925) at dilution of 1:100 (40x lens). Perform microwave antigen retrieval with 10 mM PBS buffer pH 7.2 before commencing with immunohistochemistry staining protocol.



Immunohistochemistry analysis of paraffin-embedded human liver cancer using HCLS1 antibody (STJ23925) at dilution of 1:100 (40x lens). Perform microwave antigen retrieval with 10 mM PBS buffer pH 7.2 before commencing with immunohistochemistry staining protocol.



Western blot analysis of extracts of various cell lines, using HCLS1 antibody (STJ23925) at 1:1000 dilution. Secondary antibody: HRP Goat Anti-Rabbit IgG (H+L) (STJ000856) at 1:10000 dilution. Lysates/proteins: 25 µg per lane. Blocking buffer: 3% nonfat dry milk in TBST.