

Anti-HAVCR2 antibody (22-202) (STJ23914)

GENERAL INFORMATION

Product Type	Primary antibodies
Applications	WB/IHC-P/ELISA
Host / Source	Rabbit
Reactivity	Human/Mouse/Rat

PRODUCT PROPERTIES

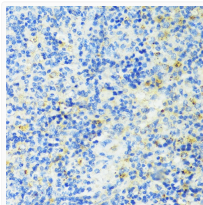
Clonality	Polyclonal
Concentration	Lot specific
Conjugation	Unconjugated
Purification	Affinity purification
Dilution Range	WB:1:500-1:1000 IHC-P:1:50-1:200 ELISA:Recommended starting concentration is 1 Mu g/mL. Please optimize the concentration based on your specific assay requirements.
Formulation	PBS with 0.09% Sodium Azide, 50% Glycerol, pH 7.3.
Isotype	IgG
Molecular Weight	Protein Mw: 33kDa Observed Mw: 45-70kDa
Storage Instruction	Store at -20°C for up to 1 year from the date of receipt, and avoid repeat freeze-thaw cycles.

TARGET INFORMATION

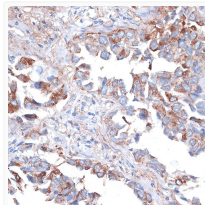
Gene ID	84868
Gene Symbol	HAVCR2
UniProt ID	HAVR2_HUMAN
Immunogen Region	22-202
Immunogen Sequence	SEVEYRAEYVGNAYLPCFYT PAAPGNLVPVCWGKACPVF ECGNVVLRDTERDVNYWTSR YWLNGDFRKGDVSLTIENVT LADSGIYCCRIQIPGIMNDE KFNKLVKIPAKVTPAPTRQ RDFTAFAFPRMLTTRGHGPAE QTTLGSLPDINLTQISTLAN ELRDSRLANDLRDSDGATIRI G
Specificity	Recombinant fusion protein containing a sequence corresponding to amino acids 22-202 of human TIM-3/HAVCR2 (NP_116171.3).

ADDITIONAL INFORMATION

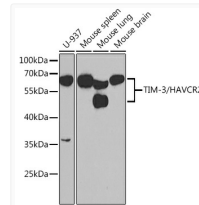
Note **STRICTLY FOR FURTHER SCIENTIFIC RESEARCH USE ONLY (RUO). MUST NOT TO BE USED IN DIAGNOSTIC OR THERAPEUTIC APPLICATIONS.**



Immunohistochemistry analysis of TIM-3/HAVCR2 in paraffin-embedded mouse spleen using TIM-3/HAVCR2 Rabbit polyclonal antibody (STJ23914) at dilution of 1:100 (40x lens). Perform microwave antigen retrieval with 10 mM PBS buffer pH 7.2 before commencing with immunohistochemistry staining protocol.



Immunohistochemistry analysis of TIM-3/HAVCR2 in paraffin-embedded human lung cancer using TIM-3/HAVCR2 Rabbit polyclonal antibody (STJ23914) at dilution of 1:100 (40x lens). Perform microwave antigen retrieval with 10 mM PBS buffer pH 7.2 before commencing with immunohistochemistry staining protocol.



Western blot analysis of various lysates using TIM-3/HAVCR2 Rabbit polyclonal antibody (STJ23914) at 1:1000 dilution. Secondary antibody: HRP Goat Anti-Rabbit IgG (H+L) (STJS000856) at 1:10000 dilution. Lysates/proteins: 25 Mu g per lane. Blocking buffer: 3% nonfat dry milk in TBST. Detection: ECL Enhanced Kit. Exposure time: 5s.