

Anti-GPC6 antibody (320-530) (STJ23838)

GENERAL INFORMATION

Product Type	Primary antibodies
Applications	WB/IF/ICC/ELISA
Host / Source	Rabbit
Reactivity	Human/Mouse

PRODUCT PROPERTIES

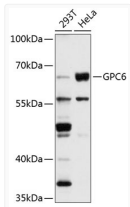
Clonality	Polyclonal
Concentration	Lot specific
Conjugation	Unconjugated
Purification	Affinity purification
Dilution Range	WB:1:500-1:1000 IF/CC:1:50-1:200 ELISA:Recommended starting concentration is 1 Mu g/mL. Please optimize the concentration based on your specific assay requirements.
Formulation	PBS with 0.02% Sodium Azide, 50% Glycerol, pH 7.3.
Isotype	IgG
Molecular Weight	Protein Mw: 63kDa Observed Mw: 63kDa
Storage Instruction	Store at -20°C for up to 1 year from the date of receipt, and avoid repeat freeze-thaw cycles.

TARGET INFORMATION

Gene ID	10082
Gene Symbol	GPC6
UniProt ID	GPC6_HUMAN
Immunogen Region	320-530
Immunogen Sequence	SEAIMNMQENSMQVSAKV FQ GCGQPKPAPALRSARSAPEN FNTRFRPYNPEERPTTAAGT SLDRLVTDIKEKLSKKVW SALPYTICKDESVTAGTSNE EECWNGHSKARYLPEIMNDG LTNQINNPEVDVDITRPDTF IRQQIMALRVMTNKLKNAYN GNDVNFQDTSDESSGSGSGS GCMDDVCPTFEFEFVTTEAPA VDPDRREVDSS
Specificity	Recombinant fusion protein containing a sequence corresponding to amino acids 320-530 of human GPC6 (NP_005699.1).

ADDITIONAL INFORMATION

Note STRICTLY FOR FURTHER SCIENTIFIC RESEARCH USE ONLY (RUO). MUST NOT TO BE USED IN DIAGNOSTIC OR THERAPEUTIC APPLICATIONS.



Western blot analysis of extracts of various cell lines, using GPC6 antibody (STJ23838) at 1:1000 dilution. Secondary antibody: HRP Goat Anti-Rabbit IgG (H+L) (STJS000856) at 1:10000 dilution. Lysates/proteins: 25 Mu g per lane. Blocking buffer: 3% nonfat dry milk in TBST. Detection: ECL Basic Kit. Exposure time: 10s.