

## Anti-GNAO1 antibody (60-180) (STJ23814)

### GENERAL INFORMATION

Product Type	Primary antibodies
Applications	WB/IF/ICC/ELISA
Host / Source	Rabbit
Reactivity	Human/Mouse/Rat

### PRODUCT PROPERTIES

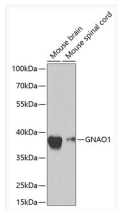
Clonality	Polyclonal
Concentration	Lot specific
Conjugation	Unconjugated
Purification	Affinity purification
Dilution Range	WB:1:500-1:2000 IF/CC:1:50-1:200 ELISA:Recommended starting concentration is 1 $\mu$ g/mL. Please optimize the concentration based on your specific assay requirements.
Formulation	PBS with 0.09% Sodium Azide, 50% Glycerol, pH 7.3.
Isotype	IgG
Molecular Weight	Protein Mw: 40kDa Observed Mw: 39kDa
Storage Instruction	Store at -20°C for up to 1 year from the date of receipt, and avoid repeat freeze-thaw cycles.

### TARGET INFORMATION

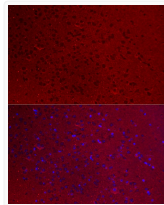
Gene ID	<a href="#">2775</a>
Gene Symbol	<a href="#">GNAO1</a>
UniProt ID	<a href="#">GNAO_HUMAN</a>
Immunogen Region	60-180
Immunogen Sequence	GFSGEDVKQYKPVVYSNTIQ SLAAIVRAMDTLGIEYGDKE RKADAKMVCDVVSRLMEDTEP FSAELLSAMMRLWGDSGIQE CFNRSREYQLNDSAKYYLDS LDRIGAADYQPTEQDILRTR V
Specificity	Recombinant fusion protein containing a sequence corresponding to amino acids 60-180 of human GNAO1 (NP_066268.1).

### ADDITIONAL INFORMATION

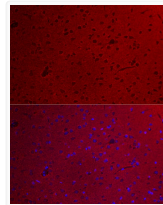
Note **STRICTLY FOR FURTHER SCIENTIFIC RESEARCH USE ONLY (RUO). MUST NOT TO BE USED IN DIAGNOSTIC OR THERAPEUTIC APPLICATIONS.**



Western blot analysis of extracts of various cell lines, using GNAO1 antibody (STJ23814) at 1:1000 dilution. Secondary antibody: HRP Goat Anti-rabbit IgG (H+L) (STJS000856) at 1:10000 dilution. Lysates/proteins: 25  $\mu$ g per lane. Blocking buffer: 3% non-fat dry milk in TBST.



Immunofluorescence analysis of mouse brain cells using GNAO1 rabbit polyclonal antibody (STJ23814) at dilution of 1:100 (40x lens). Blue: DAPI for nuclear staining.



Immunofluorescence analysis of rat brain cells using GNAO1 rabbit polyclonal antibody (STJ23814) at dilution of 1:100 (40x lens). Blue: DAPI for nuclear staining.