

Anti-GNA11 antibody (250-359) (STJ23811)

GENERAL INFORMATION

Product Type	Primary antibodies
Applications	WB/IHC-P/ELISA
Host / Source	Rabbit
Reactivity	Human/Mouse/Rat

PRODUCT PROPERTIES

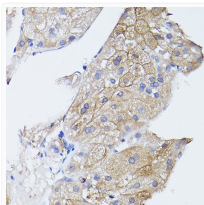
Clonality	Polyclonal
Concentration	Lot specific
Conjugation	Unconjugated
Purification	Affinity purification
Dilution Range	WB:1:500-1:2000 IHC-P:1:50-1:200 ELISA:Recommended starting concentration is 1 µg/mL. Please optimize the concentration based on your specific assay requirements.
Formulation	PBS with 0.01% Thimerosal, 50% Glycerol, pH 7.3.
Isotype	IgG
Molecular Weight	Protein Mw: 42kDa Observed Mw: 42kDa
Storage Instruction	Store at -20°C for up to 1 year from the date of receipt, and avoid repeat freeze-thaw cycles.

TARGET INFORMATION

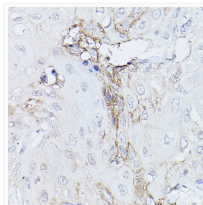
Gene ID	2767
Gene Symbol	GNA11
UniProt ID	GNA11_HUMAN
Immunogen Region	250-359
Immunogen Sequence	ESKALFRTIITYPWFQNSSV ILFLNKKDLLEDKILYSHLV DYFPEFDGQPQRDAQAAREFI LKMFDVLDLPDSDKIIYSHFT CATDTENIRVFVAAVKDTIL Q
Specificity	Recombinant fusion protein containing a sequence corresponding to amino acids 250-350 of human GNA11 (NP_002058.2).

ADDITIONAL INFORMATION

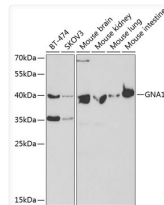
Note **STRICTLY FOR FURTHER SCIENTIFIC RESEARCH USE ONLY (RUO). MUST NOT TO BE USED IN DIAGNOSTIC OR THERAPEUTIC APPLICATIONS.**



Immunohistochemistry analysis of GNA11 in paraffin-embedded human liver cancer using GNA11 Rabbit polyclonal antibody (STJ23811) at dilution of 1:100 (40x lens). Perform high pressure antigen retrieval with 10 mM citrate buffer pH 6.0 before commencing with immunohistochemistry staining protocol.



Immunohistochemistry analysis of GNA11 in paraffin-embedded human esophageal cancer using GNA11 Rabbit polyclonal antibody (STJ23811) at dilution of 1:100 (40x lens). Perform high pressure antigen retrieval with 10 mM citrate buffer pH 6.0 before commencing with immunohistochemistry staining protocol.



Western blot analysis of various lysates using GNA11 Rabbit polyclonal antibody (STJ23811) at 1:400 dilution. Secondary antibody: HRP Goat Anti-Rabbit IgG (H+L) (STJS000856) at 1:10000 dilution. Lysates/proteins: 25 µg per lane. Blocking buffer: 3% nonfat dry milk in TBST. Detection: ECL Basic Kit. Exposure time: 90s.