

Anti-GGA2 antibody (1-300) (STJ23778)

GENERAL INFORMATION

Product Type	Primary antibodies
Applications	WB/IF/ICC/ELISA
Host / Source	Rabbit
Reactivity	Human/Mouse

PRODUCT PROPERTIES

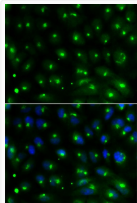
Clonality	Polyclonal
Concentration	Lot specific
Conjugation	Unconjugated
Purification	Affinity purification
Dilution Range	WB:1:500-1:2000 IF/CC:1:50-1:200 ELISA:Recommended starting concentration is 1 Mu g/mL. Please optimize the concentration based on your specific assay requirements.
Formulation	PBS with 0.02% Sodium Azide, 50% Glycerol, pH 7.3.
Isotype	IgG
Molecular Weight	Protein Mw: 67kDa Observed Mw: 72-80kDa
Storage Instruction	Store at -20°C for up to 1 year from the date of receipt, and avoid repeat freeze-thaw cycles.

TARGET INFORMATION

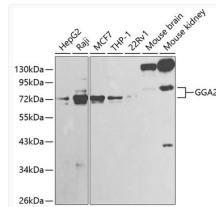
Gene ID	23062
Gene Symbol	GGA2
UniProt ID	GGA2_HUMAN
Immunogen Region	1-300
Immunogen Sequence	MAATAVAANAAGTESAQQPP GPAASLELWLNKATDPSMSE QDWSAIQNFCEQVNTDPNGP THAPWLLAHKIQSPQEKEAL YALTVLEMCNMHCGEKHFHSE VAKFRFLNELIKVLSPKYLG SWATGKVKGRVIEILFSWTV WFPEDIKIRDAYQMLKKQGI IKQDKPLPVDKILPPSPWP KSSIFDADEEKSKLLTRLLK SNHPEDLQAANRLIKNLVKE EQEKSEKSVSRVSAVEEVR
Specificity	Recombinant fusion protein containing a sequence corresponding to amino acids 1-300 of human GGA2 (NP_055859.1).

ADDITIONAL INFORMATION

Note **STRICTLY FOR FURTHER SCIENTIFIC RESEARCH USE ONLY (RUO). MUST NOT TO BE USED IN DIAGNOSTIC OR THERAPEUTIC APPLICATIONS.**



Immunofluorescence analysis of MCF-7 cells using GGA2 antibody (STJ23778). Blue: DAPI for nuclear staining.



Western blot analysis of extracts of various cell lines, using GGA2 antibody (STJ23778) at 1:1000 dilution. Secondary antibody: HRP Goat Anti-Rabbit IgG (H+L) (STJS000856) at 1:10000 dilution. Lysates/proteins: 25 Mu g per lane. Blocking buffer: 3% nonfat dry milk in TBST.