

Anti-FLT1 antibody (1100-1180) (STJ23673)

GENERAL INFORMATION

Product Type	Primary antibodies
Applications	WB/IF/ICC/ELISA
Host / Source	Rabbit
Reactivity	Human/Mouse/Rat

PRODUCT PROPERTIES

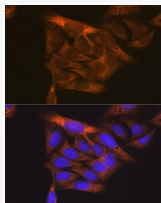
Clonality	Polyclonal
Concentration	Lot specific
Conjugation	Unconjugated
Purification	Affinity purification
Dilution Range	WB:1:500-1:1000 IF/CC:1:50-1:200 ELISA:Recommended starting concentration is 1 Mu g/mL. Please optimize the concentration based on your specific assay requirements.
Formulation	PBS with 0.01% Thimerosal, 50% Glycerol, pH 7.3.
Isotype	IgG
Molecular Weight	Protein Mw: 151kDa Observed Mw: 200kDa
Storage Instruction	Store at -20°C for up to 1 year from the date of receipt, and avoid repeat freeze-thaw cycles.

TARGET INFORMATION

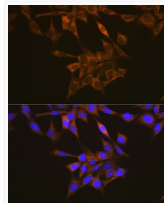
Gene ID	2321
Gene Symbol	FLT1
UniProt ID	VGFR1_HUMAN
Immunogen Region	1100-1180
Immunogen Sequence	YPGVQMQDEDFCSRLREGMRM RAPEYSTPEIQIMLDCWHR DPKERPRFAELVEKLGDLLQ ANVQQDGKDYIPINAILTGN S
Specificity	Recombinant fusion protein containing a sequence corresponding to amino acids 1100-1180 of human VEGFR1 (NP_002010.2).

ADDITIONAL INFORMATION

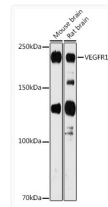
Note STRICTLY FOR FURTHER SCIENTIFIC RESEARCH USE ONLY (RUO). MUST NOT TO BE USED IN DIAGNOSTIC OR THERAPEUTIC APPLICATIONS.



Immunofluorescence analysis of U2OS cells using VEGFR1 Rabbit polyclonal antibody (STJ23673) at dilution of 1:100. Blue: DAPI for nuclear staining.



Immunofluorescence analysis of NIH/3T3 cells using VEGFR1 Rabbit polyclonal antibody (STJ23673) at dilution of 1:100. Blue: DAPI for nuclear staining.



Western blot analysis of various lysates using VEGFR1 Rabbit polyclonal antibody (STJ23673) at 1:1000 dilution. Secondary antibody: HRP Goat Anti-Rabbit IgG (H+L) (STJS000856) at 1:10000 dilution. Lysates/proteins: 25 Mu g per lane. Blocking buffer: 3% nonfat dry milk in TBST. Detection: ECL Basic Kit. Exposure time: 180s.