

Anti-FBXO32 antibody (206-355) (STJ23637)

GENERAL INFORMATION

Product Type	Primary antibodies
Applications	WB/IF/ICC/ELISA
Host / Source	Rabbit
Reactivity	Human/Mouse

PRODUCT PROPERTIES

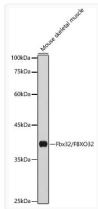
Clonality	Polyclonal
Concentration	Lot specific
Conjugation	Unconjugated
Purification	Affinity purification
Dilution Range	WB:1:500-1:1000 IF/ICC:1:50-1:200 ELISA:Recommended starting concentration is 1 μ g/mL. Please optimize the concentration based on your specific assay requirements.
Formulation	PBS with 0.09% Sodium Azide, 50% Glycerol, pH 7.3.
Isotype	IgG
Molecular Weight	Protein Mw: 42kDa Observed Mw: 40kDa
Storage Instruction	Store at -20°C for up to 1 year from the date of receipt, and avoid repeat freeze-thaw cycles.

TARGET INFORMATION

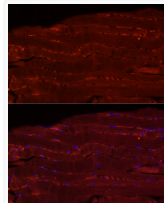
Gene ID	114907
Gene Symbol	FBXO32
UniProt ID	FBX32_HUMAN
Immunogen Region	206-355
Immunogen Sequence	WQQQLNNIQITRPAFKGLTF TDLPCLQLNIMQRLSDGRD LVSLGQAAPDLHVLSEDRLL WKKLCQYHFSERQIRKRLIL SDKGQLDWKKMYFKLVRCYP RKEQYGDTLQLCKHCHILSWS KGTDPCTANNPESCSVSLS PQDFINLFKF
Specificity	Recombinant fusion protein containing a sequence corresponding to amino acids 206-355 of human Fbx32/FBOX32 (NP_478136.1).

ADDITIONAL INFORMATION

Note **STRICTLY FOR FURTHER SCIENTIFIC RESEARCH USE ONLY (RUO). MUST NOT TO BE USED IN DIAGNOSTIC OR THERAPEUTIC APPLICATIONS.**



Western blot analysis of extracts of mouse skeletal muscle, using Fbx32/FBOX32 antibody (STJ23637) at 1:1000 dilution. Secondary antibody: HRP Goat Anti-rabbit IgG (H+L) (STJS00856) at 1:10000 dilution. Lysates/proteins: 25 μ g per lane. Blocking buffer: 3% non-fat dry milk in TBST. Detection: ECL Basic Kit. Exposure time: 10s.



Immunofluorescence analysis of mouse skeletal muscle using Fbx32/FBOX32 rabbit polyclonal antibody (STJ23637) at dilution of 1:20 (40x lens). Blue: DAPI for nuclear staining.