

## Anti-FasLG antibody (154-170) (STJ23630)

### GENERAL INFORMATION

Product Type	Primary antibodies
Applications	WB/IHC-P/ELISA
Host / Source	Rabbit
Reactivity	Human/Mouse

### PRODUCT PROPERTIES

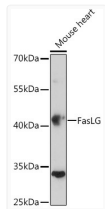
Clonality	Polyclonal
Concentration	Lot specific
Conjugation	Unconjugated
Purification	Affinity purification
Dilution Range	WB:1:500-1:2000 IHC-P:1:50-1:200 ELISA:Recommended starting concentration is 1 µg/mL. Please optimize the concentration based on your specific assay requirements.
Formulation	PBS with 0.02% Sodium Azide, 50% Glycerol, pH 7.3.
Isotype	IgG
Molecular Weight	Protein Mw: 31kDa Observed Mw: 41kDa
Storage Instruction	Store at -20°C for up to 1 year from the date of receipt, and avoid repeat freeze-thaw cycles.

### TARGET INFORMATION

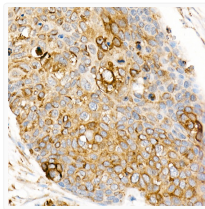
Gene ID	<a href="#">356</a>
Gene Symbol	<a href="#">FASLG</a>
UniProt ID	<a href="#">TNFL6_HUMAN</a>
Immunogen Region	154-170
Immunogen Sequence	MFQLFHLQKELAELESTSQ MHTASSLEKQIGHPSPPPEK KELRKVAHLTGKSNRSRSMPL EWEDTYGIVLLSGVKYKGG LVINETGLYFVYSKVYFRGQ SCNNLPLSHKVYMRNSKYPQ DLVMMEGKMMSYCTTGQMW A RSSLGAVFNLTADHLYVN VSELSLVNFEEQTFFGLYK L
Specificity	A synthetic peptide corresponding to a sequence within amino acids 101-200 of human FasLG (NP_000630.1).

### ADDITIONAL INFORMATION

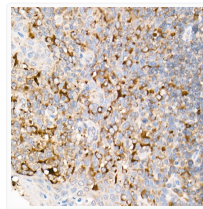
Note STRICTLY FOR FURTHER SCIENTIFIC RESEARCH USE ONLY (RUO). MUST NOT TO BE USED IN DIAGNOSTIC OR THERAPEUTIC APPLICATIONS.



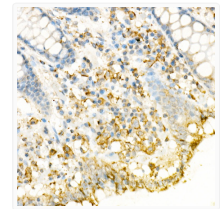
Western blot analysis of extracts of mouse heart, using FasLG antibody (STJ23630) at 1:500 dilution. Secondary antibody: HRP Goat Anti-rabbit IgG (H+L) (STJS000856) at 1:10000 dilution. Lysates/proteins: 25 µg per lane. Blocking buffer: 3% non-fat dry milk in TBST. Detection: ECL Enhanced Kit. Exposure time: 5min.



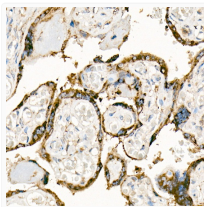
Immunohistochemistry analysis of paraffin-embedded Human esophageal cancer using FasLG antibody (STJ23630) at dilution of 1:100 (40x lens). Perform high pressure antigen retrieval with 10 mM citrate buffer pH 6.0 before commencing with immunohistochemistry staining protocol.



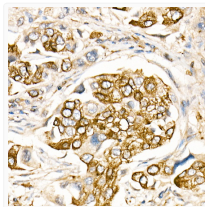
Immunohistochemistry analysis of paraffin-embedded Human tonsil using FasLG antibody (STJ23630) at dilution of 1:100 (40x lens). Perform high pressure antigen retrieval with 10 mM citrate buffer pH 6.0 before commencing with immunohistochemistry staining protocol.



Immunohistochemistry analysis of paraffin-embedded Human colon using FasLG antibody (STJ23630) at dilution of 1:100 (40x lens). Perform high pressure antigen retrieval with 10 mM citrate buffer pH 6.0 before commencing with immunohistochemistry staining protocol.



Immunohistochemistry analysis of paraffin-embedded Human placenta using FasLG antibody (STJ23630) at dilution of 1:100 (40x lens). Perform high pressure antigen retrieval with 10 mM citrate buffer pH 6.0 before commencing with immunohistochemistry staining protocol.



Immunohistochemistry analysis of paraffin-embedded Human lung cancer using FasLG antibody (STJ23630) at dilution of 1:100 (40x lens). Perform high pressure antigen retrieval with 10 mM citrate buffer pH 6.0 before commencing with immunohistochemistry staining protocol.