

## Anti-FANCD2 antibody (540-720) (STJ23624)

### GENERAL INFORMATION

Product Type	Primary antibodies
Applications	WB/IF/ICC/IP/ELISA
Host / Source	Rabbit
Reactivity	Human/Rat

### PRODUCT PROPERTIES

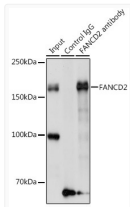
Clonality	Polyclonal
Concentration	Lot specific
Conjugation	Unconjugated
Purification	Affinity purification
Dilution Range	WB:1:500-1:2000 IF/CC:1:50-1:200 IP:0.5 Mu g-4 Mu g antibody for 200 Mu g-400 Mu g extracts of whole cells ELISA:Recommended starting concentration is 1 Mu g/mL. Please optimize the concentration based on your specific assay requirements
Formulation	PBS with 0.01% Thimerosal, 50% Glycerol, pH 7.3.
Isotype	IgG
Molecular Weight	Protein Mw: 164kDa Observed Mw: 180kDa/164kDa
Storage Instruction	Store at -20°C for up to 1 year from the date of receipt, and avoid repeat freeze-thaw cycles.

### TARGET INFORMATION

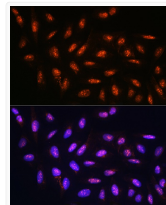
Gene ID	<a href="#">2177</a>
Gene Symbol	<a href="#">FANCD2</a>
UniProt ID	<a href="#">FACD2_HUMAN</a>
Immunogen Region	540-720
Immunogen Sequence	AFSKQNEASSHIQDDMHLVI RKQLSSTVFYKYLIGIGAV TMAGIMAADRSESPSLTQER ANLSDEQCTQVTSLLQLVHS CSEQSPQASALYDEFANLI QHEKLDPKALEWVGHATICND FQDAFVVDSCVVPEGDFPPF VKALYGLEEYDTQDGIAINL LPLLFSQDFAKDGGPVTSQE S
Specificity	Recombinant fusion protein containing a sequence corresponding to amino acids 540-720 of FANCD2 (NP_001018125.1).

### ADDITIONAL INFORMATION

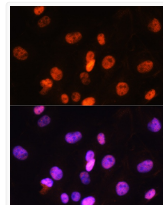
Note STRICTLY FOR FURTHER SCIENTIFIC RESEARCH USE ONLY (RUO). MUST NOT TO BE USED IN DIAGNOSTIC OR THERAPEUTIC APPLICATIONS.



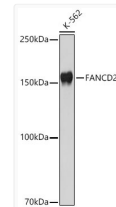
Immunoprecipitation analysis of 200 Mu g extracts of A-549 cells using 3 Mu g FANCD2 antibody (STJ23624). Western blot was performed from the immunoprecipitate using FANCD2 antibody (STJ23624) at a dilution of 1:1000.



Immunofluorescence analysis of U2OS cells using FANCD2 Rabbit polyclonal antibody (STJ23624) at dilution of 1:100. Secondary antibody: Cy3 Goat Anti-Rabbit IgG (H+L) at 1:500 dilution. Blue: DAPI for nuclear staining.



Immunofluorescence analysis of C6 cells using FANCD2 Rabbit polyclonal antibody (STJ23624) at dilution of 1:100. Secondary antibody: Cy3 Goat Anti-Rabbit IgG (H+L) at 1:500 dilution. Blue: DAPI for nuclear staining.



Western blot analysis of lysates from K-562 cells using FANCD2 Rabbit polyclonal antibody (STJ23624) at 1:1000 dilution. Secondary antibody: HRP Goat Anti-Rabbit IgG (H+L) (STJS000856) at 1:10000 dilution. Lysates/proteins: 25 Mu g per lane. Blocking buffer: 3% nonfat dry milk in TBST. Detection: ECL Basic Kit. Exposure time: 30s.