

Anti-F9 antibody (29-461) (STJ23601)

GENERAL INFORMATION

Product Type	Primary antibodies
Applications	WB/IF/ICC/ELISA
Host / Source	Rabbit
Reactivity	Human/Mouse/Rat

PRODUCT PROPERTIES

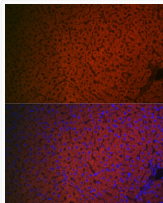
Clonality	Polyclonal
Concentration	Lot specific
Conjugation	Unconjugated
Purification	Affinity purification
Dilution Range	WB:1:500-1:1000 IF/CC:1:50-1:200 ELISA:Recommended starting concentration is 1 µg/mL. Please optimize the concentration based on your specific assay requirements.
Formulation	PBS with 0.05% Proclin300, 50% Glycerol, pH 7.3.
Isotype	IgG
Molecular Weight	Protein Mw: 52kDa Observed Mw: 52kDa/66kDa
Storage Instruction	Store at -20°C for up to 1 year from the date of receipt, and avoid repeat freeze-thaw cycles.

TARGET INFORMATION

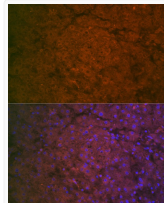
Gene ID	2158
Gene Symbol	F9
UniProt ID	FA9_HUMAN
Immunogen Region	29-461
Immunogen Sequence	TVFLDHENANKILNRPKRYN SGKLEEFVQGNLERECMEEK CSFEEAREVFENTERTTEFW KQYVDGQDCESNPCLNGGSC KDDINSYECWCPFGFEGKNC ELDVTCNIKNGRCEQFCCKNS ADNKVVCSTEGYRLAENQK SCEPVPFPCGRVSVSQTSK LTRA
Specificity	Recombinant fusion protein containing a sequence corresponding to amino acids 29-192 of human Factor IX/F9 (NP_000124.1).

ADDITIONAL INFORMATION

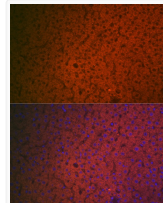
Note **STRICTLY FOR FURTHER SCIENTIFIC RESEARCH USE ONLY (RUO). MUST NOT TO BE USED IN DIAGNOSTIC OR THERAPEUTIC APPLICATIONS.**



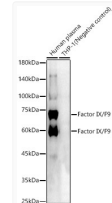
Immunofluorescence analysis of mouse liver cells using Factor IX/ F9 Rabbit polyclonal antibody (STJ23601) at dilution of 1:100 (40x lens). Blue: DAPI for nuclear staining.



Immunofluorescence analysis of human liver cells using Factor IX/ F9 Rabbit polyclonal antibody (STJ23601) at dilution of 1:100 (40x lens). Blue: DAPI for nuclear staining.



Immunofluorescence analysis of rat liver cells using Factor IX/ F9 Rabbit polyclonal antibody (STJ23601) at dilution of 1:100 (40x lens). Blue: DAPI for nuclear staining.



Western blot analysis of various lysates, using Factor IX/ F9 Rabbit polyclonal antibody (STJ23601) at 1:1000 dilution. Secondary antibody: HRP Goat Anti-Rabbit IgG (H+L) (STJS000856) at 1:10000 dilution. Lysates/proteins: 25 µg per lane. Blocking buffer: 3% nonfat dry milk in TBST. Detection: ECL Basic Kit. Exposure time: 90s.