

Anti-F10 antibody (235-488) (STJ23593)

GENERAL INFORMATION

Product Type	Primary antibodies
Applications	WB/IF/ICC/ELISA
Host / Source	Rabbit
Reactivity	Human/Mouse

PRODUCT PROPERTIES

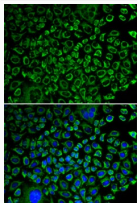
Clonality	Polyclonal
Concentration	Lot specific
Conjugation	Unconjugated
Purification	Affinity purification
Dilution Range	WB:1:500-1:2000 IF/CC:1:10-1:100 ELISA:Recommended starting concentration is 1 μ g/mL. Please optimize the concentration based on your specific assay requirements.
Formulation	PBS with 0.02% Sodium Azide, 50% Glycerol, pH 7.3.
Isotype	IgG
Molecular Weight	Protein Mw: 55kDa Observed Mw: 75kDa
Storage Instruction	Store at -20°C for up to 1 year from the date of receipt, and avoid repeat freeze-thaw cycles.

TARGET INFORMATION

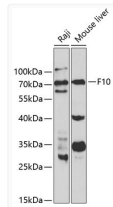
Gene ID	2159
Gene Symbol	F10
UniProt ID	FA10_HUMAN
Immunogen Region	235-488
Immunogen Sequence	IVGGQECKDGECPWQALLIN EENEGFCGGTILSEFYILTA AHCLYQAKRFKVRVGDNRNTE QEEGGEAVHEVEVVIKHNRF TKETYDFDIAVLRRLKTPITF RMNVAPACLPERDWAESTLM TQKTGIVSGFGRTHEKGRQS TRMKMLEVPYVDRNSCKLSS SFITQNMFCAGYDTKQEDA CQGDSGGPHVTRFKDITYFVT GIVSWGEGCARKGKYGIYTK VTAFLKWIDRSMKTRGLPK
Specificity	Recombinant fusion protein containing a sequence corresponding to amino acids 235-488 of human F10 (NP_000495.1).

ADDITIONAL INFORMATION

Note **STRICTLY FOR FURTHER SCIENTIFIC RESEARCH USE ONLY (RUO). MUST NOT TO BE USED IN DIAGNOSTIC OR THERAPEUTIC APPLICATIONS.**



Immunofluorescence analysis of A549 cells using F10 antibody (STJ23593). Blue: DAPI for nuclear staining.



Western blot analysis of extracts of various cell lines, using F10 antibody (STJ23593) at 1:1000 dilution. Secondary antibody: HRP Goat Anti-Rabbit IgG (H+L) (STJS000856) at 1:10000 dilution. Lysates/proteins: 25 μ g per lane. Blocking buffer: 3% nonfat dry milk in TBST.