

## Anti-EXTL3 antibody (52-220) (STJ23590)

### GENERAL INFORMATION

|               |                    |
|---------------|--------------------|
| Product Type  | Primary antibodies |
| Applications  | WB/IHC-P/ELISA     |
| Host / Source | Rabbit             |
| Reactivity    | Human/Mouse/Rat    |

### PRODUCT PROPERTIES

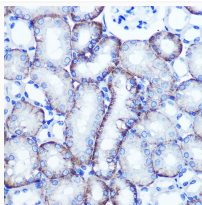
|                     |   |
|---------------------|---|
| Clonality           | Polyclonal  |
| Concentration       | Lot specific  |
| Conjugation         | Unconjugated  |
| Purification        | Affinity purification   |
| Dilution Range      | WB:1:200-1:2000<br>IHC-P:1:50-1:200<br>ELISA:Recommended starting concentration is 1 $\mu$ g/mL. Please optimize the concentration based on your specific assay requirements. |
| Formulation         | PBS with 0.02% Sodium Azide, 50% Glycerol, pH 7.3.  |
| Isotype             | IgG   |
| Molecular Weight    | Protein Mw: 105kDa<br>Observed Mw: 105kDa   |
| Storage Instruction | Store at -20°C for up to 1 year from the date of receipt, and avoid repeat freeze-thaw cycles.  |

### TARGET INFORMATION

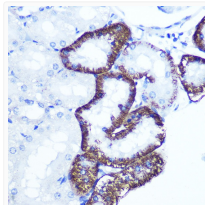
|                    |   |
|--------------------|---|
| Gene ID            | <a href="#">2137</a>  |
| Gene Symbol        | <a href="#">EXTL3</a>   |
| UniProt ID         | <a href="#">EXTL3_HUMAN</a>   |
| Immunogen Region   | 52-220  |
| Immunogen Sequence | TTLDEADEAGKRIFGPRVGN ELCEVKHVLDCRIRSVSE ELLQLEAKRQELNSEIAKLN<br>LKIEACKKSIENAKQDLLQL KNVISQTEHSYKELMAQNQP KLSLPIRLLPEKDDAGLPPP<br>KATRGCRHLNCFDYSRCPLT SGFPVYVYDSDQFVFGSYLD PLVKQAFQA |
| Specificity        | Recombinant fusion protein containing a sequence corresponding to amino acids 52-220 of human EXTL3 (NP_001431.1).  |

### ADDITIONAL INFORMATION

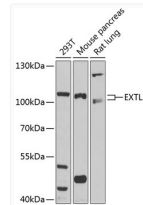
Note **STRICTLY FOR FURTHER SCIENTIFIC RESEARCH USE ONLY (RUO). MUST NOT TO BE USED IN DIAGNOSTIC OR THERAPEUTIC APPLICATIONS.**



Immunohistochemistry analysis of paraffin-embedded mouse kidney using EXTL3 Rabbit polyclonal antibody (STJ23590) at dilution of 1:100 (40x lens). Perform microwave antigen retrieval with 10 mM PBS buffer pH 7.2 before commencing with immunohistochemistry staining protocol.



Immunohistochemistry analysis of paraffin-embedded rat kidney using EXTL3 Rabbit polyclonal antibody (STJ23590) at dilution of 1:100 (40x lens). Perform microwave antigen retrieval with 10 mM PBS buffer pH 7.2 before commencing with immunohistochemistry staining protocol.



Western blot analysis of extracts of various cell lines, using EXTL3 antibody (STJ23590) at 1:1000 dilution. Secondary antibody: HRP Goat Anti-Rabbit IgG (H+L) (STJS000856) at 1:10000 dilution. Lysates/proteins: 25  $\mu$ g per lane. Blocking buffer: 3% nonfat dry milk in TBST. Detection: ECL Basic Kit. Exposure time: 5s.