

Anti-ADGRE1 antibody (477-596) (STJ23535)

GENERAL INFORMATION

Product Type	Primary antibodies
Applications	WB/IF/ICC/ELISA
Host / Source	Rabbit
Reactivity	Human/Mouse/Rat

PRODUCT PROPERTIES

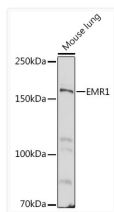
Clonality	Polyclonal
Concentration	Lot specific
Conjugation	Unconjugated
Purification	Affinity purification
Dilution Range	WB:1:100-1:500 IF/CC:1:50-1:200 ELISA:Recommended starting concentration is 1 μ g/mL. Please optimize the concentration based on your specific assay requirements.
Formulation	PBS with 0.05% Proclin300, 50% Glycerol, pH 7.3.
Isotype	IgG
Molecular Weight	Protein Mw: 98kDa Observed Mw: 160kDa
Storage Instruction	Store at -20°C for up to 1 year from the date of receipt, and avoid repeat freeze-thaw cycles.

TARGET INFORMATION

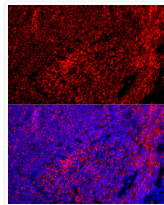
Gene ID	2015
Gene Symbol	ADGRE1
UniProt ID	AGRE1_HUMAN
Immunogen Region	477-596
Immunogen Sequence	GVAFVSFVGMESVLNERFFK DHQAPLTTSEIKLMNSRVV GGIMTGEKKDGFSDPIIYTL ENIQPKQKFERPICVSWSTD VKGGRWTSFGCVILEASETY TICSCNQMANLAVIMASGEL
Specificity	Recombinant fusion protein containing a sequence corresponding to amino acids 477-596 of human EMR1 (NP_001965.3).

ADDITIONAL INFORMATION

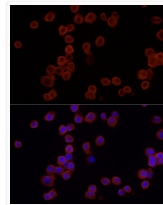
Note STRICTLY FOR FURTHER SCIENTIFIC RESEARCH USE ONLY (RUO). MUST NOT TO BE USED IN DIAGNOSTIC OR THERAPEUTIC APPLICATIONS.



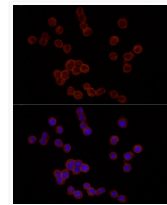
Western blot analysis of extracts of mouse lung, using EMR1 antibody (STJ23535) at 1:500 dilution. Secondary antibody: HRP Goat Anti-rabbit IgG (H+L) (STJS000856) at 1:10000 dilution. Lysates/proteins: 25 μ g per lane. Blocking buffer: 3% non-fat dry milk in TBST. Detection: ECL Basic Kit. Exposure time: 60s.



Immunofluorescence analysis of mouse spleen using EMR1 antibody (STJ23535) at dilution of 1:100 (40x lens). Blue: DAPI for nuclear staining.



Immunofluorescence analysis of RAW264.7 cells using EMR1 rabbit polyclonal antibody (STJ23535) at dilution of 1:25 (40x lens). Blue: DAPI for nuclear staining.



Immunofluorescence analysis of THP-1 cells using EMR1 rabbit polyclonal antibody (STJ23535) at dilution of 1:25 (40x lens). Blue: DAPI for nuclear staining.