

Anti-EMD antibody (1-220) (STJ23533)

GENERAL INFORMATION

Product Type	Primary antibodies
Applications	WB/IHC-P/IF/ICC/ELISA
Host / Source	Rabbit
Reactivity	Human/Mouse

PRODUCT PROPERTIES

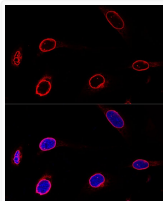
Clonality	Polyclonal
Concentration	Lot specific
Conjugation	Unconjugated
Purification	Affinity purification
Dilution Range	WB:1:500-1:2000 IHC-P:1:50-1:200 IF/CC:1:20-1:100 ELISA:Recommended starting concentration is 1 Mu g/mL. Please optimize the concentration based on your specific assay requirements.
Formulation	PBS with 0.02% Sodium Azide, 50% Glycerol, pH 7.3.
Isotype	IgG
Molecular Weight	Protein Mw: 29kDa Observed Mw: 35kDa
Storage Instruction	Store at -20°C for up to 1 year from the date of receipt, and avoid repeat freeze-thaw cycles.

TARGET INFORMATION

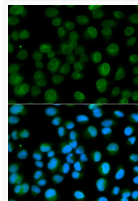
Gene ID	2010
Gene Symbol	EMD
UniProt ID	EMD_HUMAN
Immunogen Region	1-220
Immunogen Sequence	MDNYADLSDELTTLLRRYN IPHGVPVVGSTRRLYEKKIFE YETQRRRLSPSSSAASSYS FSDLNSTRGDADMYDLPKKE DALLYQSKGYNDYYEESYF TTRTYGEPESAGPSRAVRQS VTSFPDADAFHHQVHDDLL SSSEEECKDRERPMYGRDSA YQSITHYRPVSASRSSLDLS YYPTSSSTFSMSSSSSSSW LTRRAIRPENRAPGAGLGQD
Specificity	Recombinant fusion protein containing a sequence corresponding to amino acids 1-220 of human Emerin/Emerin/EMD (NP_000108.1).

ADDITIONAL INFORMATION

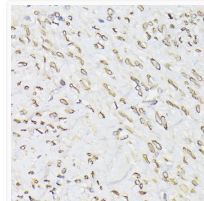
Note STRICTLY FOR FURTHER SCIENTIFIC RESEARCH USE ONLY (RUO). MUST NOT TO BE USED IN DIAGNOSTIC OR THERAPEUTIC APPLICATIONS.



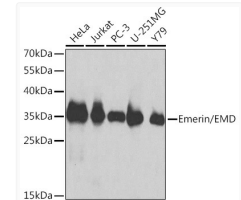
Confocal immunofluorescence analysis of U-2 OS cells using Emerin/EMD Rabbit polyclonal antibody (STJ23533) at dilution of 1:100. Blue: DAPI for nuclear staining.



Immunofluorescence analysis of HeLa cells using Emerin/EMD Rabbit polyclonal antibody (STJ23533). Secondary antibody: Cy3 Goat Anti-Rabbit IgG (H+L) at 1:500 dilution. Blue: DAPI for nuclear staining.



Immunohistochemistry analysis of Emerin/EMD in paraffin-embedded human uterus using Emerin/EMD Rabbit polyclonal antibody (STJ23533) at dilution of 1:100 (40x lens). Perform microwave antigen retrieval with 10 mM PBS buffer pH 7.2 before commencing with immunohistochemistry staining protocol.



Western blot analysis of various lysates using Emerin/EMD Rabbit polyclonal antibody (STJ23533) at 1:1000 dilution. Secondary antibody: HRP Goat Anti-Rabbit IgG (H+L) (STJS000856) at 1:10000 dilution. Lysates/proteins: 25 Mu g per lane. Blocking buffer: 3% nonfat dry milk in TBST.