

## Anti-ELOVL4 antibody (1-100) (STJ23530)

### GENERAL INFORMATION

Product Type	Primary antibodies
Applications	WB/IF/ICC/ELISA
Host / Source	Rabbit
Reactivity	Human/Mouse/Rat

### PRODUCT PROPERTIES

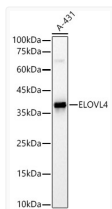
Clonality	Polyclonal
Concentration	Lot specific
Conjugation	Unconjugated
Purification	Affinity purification
Dilution Range	WB:1:500-1:1000 IF/CC:1:50-1:200 ELISA:Recommended starting concentration is 1 $\mu$ g/mL. Please optimize the concentration based on your specific assay requirements.
Formulation	PBS with 0.05% Proclin300, 50% Glycerol, pH 7.3.
Isotype	IgG
Molecular Weight	Protein Mw: 37kDa Observed Mw: 37kDa/
Storage Instruction	Store at -20°C for up to 1 year from the date of receipt, and avoid repeat freeze-thaw cycles.

### TARGET INFORMATION

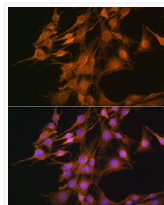
Gene ID	<a href="#">6785</a>
Gene Symbol	<a href="#">ELOVL4</a>
UniProt ID	<a href="#">ELOV4_HUMAN</a>
Immunogen Region	1-100
Immunogen Sequence	MGLLDSEPGSVLNVVSTALN DTVEFYRWTWSIADKRVENW PLMQSPWPTLSISTLYLLFV WLGPKWMKDRPFQMRVLVI IYNFGMVLLNLFIFRELFMG
Specificity	A synthetic peptide corresponding to a sequence within amino acids 1-100 of human ELOVL4 (NP_073563.1).

### ADDITIONAL INFORMATION

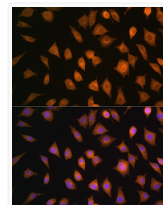
Note **STRICTLY FOR FURTHER SCIENTIFIC RESEARCH USE ONLY (RUO). MUST NOT TO BE USED IN DIAGNOSTIC OR THERAPEUTIC APPLICATIONS.**



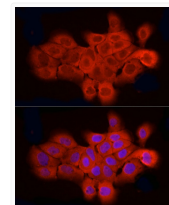
Western blot analysis of A-431, using ELOVL4 antibody (STJ23530) at 1:400 dilution. Secondary antibody: HRP Goat Anti-rabbit IgG (H+L) (STJS000856) at 1:10000 dilution. Lysates/proteins: 25  $\mu$ g per lane. Blocking buffer: 3% non-fat dry milk in TBST. Detection: ECL Basic Kit. Exposure time: 180s.



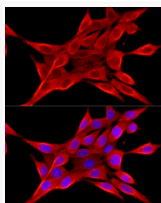
Immunofluorescence analysis of C6 cells using ELOVL4 rabbit polyclonal antibody (STJ23530) at dilution of 1:100. Blue: DAPI for nuclear staining.



Immunofluorescence analysis of L929 cells using ELOVL4 rabbit polyclonal antibody (STJ23530) at dilution of 1:100. Blue: DAPI for nuclear staining.



Immunofluorescence analysis of A-431 cells using ELOVL4 rabbit polyclonal antibody (STJ23530) at dilution of 1:50 (40x lens). Blue: DAPI for nuclear staining.



Immunofluorescence analysis of NIH/3T3 cells using ELOVL4 rabbit polyclonal antibody (STJ23530) at dilution of 1:50 (40x lens). Blue: DAPI for nuclear staining.