

## Anti-ELN antibody (27-200) (STJ23529)

### GENERAL INFORMATION

Product Type	Primary antibodies
Applications	WB/IHC-P/IF/ICC/ELISA
Host / Source	Rabbit
Reactivity	Human/Mouse/Rat

### PRODUCT PROPERTIES

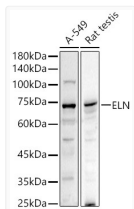
Clonality	Polyclonal
Concentration	Lot specific
Conjugation	Unconjugated
Purification	Affinity purification
Dilution Range	WB:1:500-1:1000 IHC-P:1:1000-1:5000 IF/ICC:1:50-1:200 ELISA:Recommended starting concentration is 1 Mu g/mL. Please optimize the concentration based on your specific assay requirements.
Formulation	PBS with 0.02% Sodium Azide, 50% Glycerol, pH 7.3.
Isotype	IgG
Molecular Weight	Protein Mw: 68kDa Observed Mw: 70kDa
Storage Instruction	Store at -20°C for up to 1 year from the date of receipt, and avoid repeat freeze-thaw cycles.

### TARGET INFORMATION

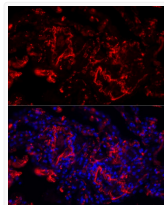
Gene ID	<a href="#">2006</a>
Gene Symbol	<a href="#">ELN</a>
UniProt ID	<a href="#">ELN_HUMAN</a>
Immunogen Region	27-200
Immunogen Sequence	GGVPGAIPGGVPGGVFYPGA GLGALGGGALGPGGKPLKPV PGGLAGAGLGAGLGAFPAVT FPGALVPGGVADAAAAYKAA KAGAGLGGVPGVGGGLVVSAG AVVPPQPGAGVKPGKVPVGVGL PGVYPGGVLPGARFPVGVGL PGVPTGAGVKPKAPGVGGAF AGIPGVGPFGGPQP
Specificity	Recombinant fusion protein containing a sequence corresponding to amino acids 27-200 of human ELN (NP_001265868.1).

### ADDITIONAL INFORMATION

Note **STRICTLY FOR FURTHER SCIENTIFIC RESEARCH USE ONLY (RUO). MUST NOT TO BE USED IN DIAGNOSTIC OR THERAPEUTIC APPLICATIONS.**



Western blot analysis of extracts of various cell lines, using ELN antibody (STJ23529) at 1:1000 dilution. Secondary antibody: HRP Goat Anti-rabbit IgG (H+L) (STJS000856) at 1:10000 dilution. Lysates/proteins: 25 Mu g per lane. Blocking buffer: 3% non-fat dry milk in TBST. Detection: ECL Basic Kit. Exposure time: 90s.



Immunofluorescence analysis of human lung cells using ELN rabbit polyclonal antibody (STJ23529) at dilution of 1:200 (40x lens). Blue: DAPI for nuclear staining.