

## Anti-EIF3G antibody (1-320) (STJ23512)

### GENERAL INFORMATION

Product Type	Primary antibodies
Applications	WB/IF/ICC/ELISA
Host / Source	Rabbit
Reactivity	Human/Mouse/Rat

### PRODUCT PROPERTIES

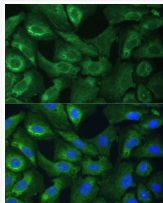
Clonality	Polyclonal
Concentration	Lot specific
Conjugation	Unconjugated
Purification	Affinity purification
Dilution Range	WB:1:200-1:2000 IF/CC:1:50-1:200 ELISA:Recommended starting concentration is 1 Mu g/mL. Please optimize the concentration based on your specific assay requirements.
Formulation	PBS with 0.02% Sodium Azide, 50% Glycerol, pH 7.3.
Isotype	IgG
Molecular Weight	Protein Mw: 36kDa Observed Mw: 42kDa
Storage Instruction	Store at -20°C for up to 1 year from the date of receipt, and avoid repeat freeze-thaw cycles.

### TARGET INFORMATION

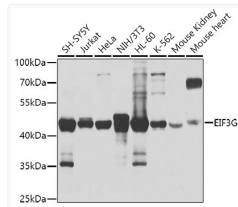
Gene ID	<a href="#">8666</a>
Gene Symbol	<a href="#">EIF3G</a>
UniProt ID	<a href="#">EIF3G_HUMAN</a>
Immunogen Region	1-320
Immunogen Sequence	MPTGDFDSKPSWADQVEE EG EDDKCVTSELLKGIPLATGD TSPEPELLPGAPLPPPKEVI NGNIKTVEYKIDEDGKKFK IVRTFRIETRKASKAVARRK NWKKFGNSEFDPPGPNVATT TVSDDVSMTFITSKEDLNCQ EEEDPMNKLKGQKIVSCRIC KGDHWTTTRCPYKDTLGPMPQK ELAEQLGLSTGEKEKLP GEL EPVQATQNKTKGYVPPSLRD GASRRGESMQPNRRADDNA
Specificity	Recombinant fusion protein containing a sequence corresponding to amino acids 1-320 of human EIF3G (NP_003746.2).

### ADDITIONAL INFORMATION

Note STRICTLY FOR FURTHER SCIENTIFIC RESEARCH USE ONLY (RUO). MUST NOT TO BE USED IN DIAGNOSTIC OR THERAPEUTIC APPLICATIONS.



Immunofluorescence analysis of U-2 OS cells using EIF3G Polyclonal Antibody (STJ23512) at dilution of 1:100 (40x lens). Blue: DAPI for nuclear staining.



Western blot analysis of extracts of various cell lines, using EIF3G antibody (STJ23512) at 1:1000 dilution. Secondary antibody: HRP Goat Anti-Rabbit IgG (H+L) (STJS000856) at 1:10000 dilution. Lysates/proteins: 25 Mu g per lane. Blocking buffer: 3% nonfat dry milk in TBST. Detection: ECL Basic Kit. Exposure time: 1s.