

Anti-EEF2 antibody (1-290) (STJ23480)

GENERAL INFORMATION

Product Type	Primary antibodies
Applications	WB/ELISA
Host / Source	Rabbit
Reactivity	Human

PRODUCT PROPERTIES

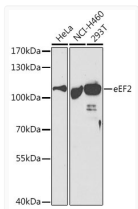
Clonality	Polyclonal
Concentration	Lot specific
Conjugation	Unconjugated
Purification	Affinity purification
Dilution Range	WB:1:500-1:2000 ELISA:Recommended starting concentration is 1 Mu g/mL. Please optimize the concentration based on your specific assay requirements.
Formulation	PBS with 0.02% Sodium Azide, 50% Glycerol, pH 7.3.
Isotype	IgG
Molecular Weight	Protein Mw: 95kDa Observed Mw: 107kDa
Storage Instruction	Store at-20°C for up to 1 year from the date of receipt, and avoid repeat freeze-thaw cycles.

TARGET INFORMATION

Gene ID	1938
Gene Symbol	EEF2
UniProt ID	EF2_HUMAN
Immunogen Region	1-290
Immunogen Sequence	MVNFTVDQIRAIMDKKANIR NMSVIAHVDHGKSTLTDSLK CKAGIIASARAGETRFTDTR KDEQERCITIKSTAI SLFYE LSENDLNFIKQSKDGAGFLI NLIDSPGHVDFSEVTAALR VTDGALVVVDCVSGVCVQTE TVLRQAI AERIKPVLMMNKM DRALLELQLEPEELYQTFQR IVENVNVIISTYGE GEGSGPM GNIMIDPVLGTVGFGSGLHG WAFTLKQFAEMYVAKFAAK
Specificity	Recombinant fusion protein containing a sequence corresponding to amino acids 1-290 of human eEF2 (NP_001952.1).

ADDITIONAL INFORMATION

Note **STRICTLY FOR FURTHER SCIENTIFIC RESEARCH USE ONLY (RUO). MUST NOT TO BE USED IN DIAGNOSTIC OR THERAPEUTIC APPLICATIONS.**



Western blot analysis of extracts of various cell lines, using eEF2 antibody (STJ23480) at 1:500 dilution. Secondary antibody: HRP Goat Anti-Rabbit IgG (H+L) (STJS000856) at 1:10000 dilution. Lysates/proteins: 25 Mu g per lane. Blocking buffer: 3% nonfat dry milk in TBST.