

## Anti-EEF1D antibody (1-160) (STJ23477)

### GENERAL INFORMATION

Product Type	Primary antibodies
Applications	WB/IHC-P/IF/ICC/IP/ELISA
Host / Source	Rabbit
Reactivity	Human/Mouse/Rat

### PRODUCT PROPERTIES

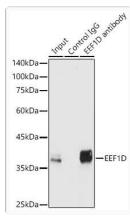
Clonality	Polyclonal
Concentration	Lot specific
Conjugation	Unconjugated
Purification	Affinity purification
Dilution Range	WB:1:500-1:2000 IHC-P:1:50-1:200 IF/CC:1:50-1:200 IP:0.5 µg-4 µg antibody for 200 µg-400 µg extracts of whole cells ELISA:Recommended starting concentration is 1 µg/mL. Please optimize the concentration based on your specif
Formulation	PBS with 0.02% Sodium Azide, 50% Glycerol, pH 7.3.
Isotype	IgG
Molecular Weight	Protein Mw: 31kDa Observed Mw: 40kDa/35kDa/40kDa
Storage Instruction	Store at-20°C for up to 1 year from the date of receipt, and avoid repeat freeze-thaw cycles.

### TARGET INFORMATION

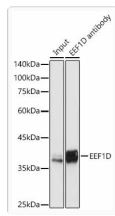
Gene ID	<a href="#">1936</a>
Gene Symbol	<a href="#">EEF1D</a>
UniProt ID	<a href="#">EF1D_HUMAN</a>
Immunogen Region	1-160
Immunogen Sequence	MATNFLAHEKIWFDFKFKYDD AERRFYEQMNGPVAGASRQE NGASVILRDIARARENIQKS LAGSSGPGASSGTSGDHGEL VVRIASLEVENQSLRGVVQE LQQAISKLEARLNVLEKSSP GHRATAPQTQHVSPMRQVEP PAKKPATPAEDEDDEDLDF
Specificity	Recombinant fusion protein containing a sequence corresponding to amino acids 1-160 of human EEF1D (NP_001123529.1).

### ADDITIONAL INFORMATION

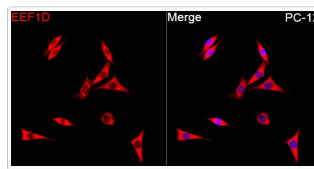
Note	STRICTLY FOR FURTHER SCIENTIFIC RESEARCH USE ONLY (RUO). MUST NOT TO BE USED IN DIAGNOSTIC OR THERAPEUTIC APPLICATIONS.
------	---



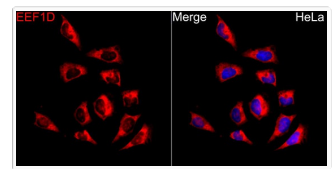
Immunoprecipitation of EEF1D in 300  $\mu$ g extracts from Jurkat cells using 3  $\mu$ g EEF1D Rabbit polyclonal antibody (STJ23477). Western blot analysis was performed using EEF1D Rabbit polyclonal antibody (STJ23477) at 1:500 dilution.



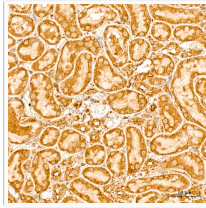
Immunoprecipitation of EEF1D in 300  $\mu$ g extracts from Jurkat cells using 3  $\mu$ g EEF1D Rabbit polyclonal antibody (STJ23477). Western blot analysis was performed using EEF1D Rabbit polyclonal antibody (STJ23477) at 1:500 dilution.



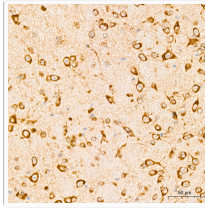
Immunofluorescence analysis of PC-12 cells using EEF1D Rabbit polyclonal antibody (STJ23477) at dilution of 1:200 (40x lens). Secondary antibody: Cy3 Goat Anti-Rabbit IgG (H+L) at 1:500 dilution. Blue: DAPI for nuclear staining.



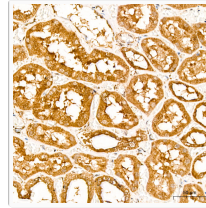
Immunofluorescence analysis of HeLa cells using EEF1D Rabbit polyclonal antibody (STJ23477) at dilution of 1:200 (40x lens). Secondary antibody: Cy3 Goat Anti-Rabbit IgG (H+L) at 1:500 dilution. Blue: DAPI for nuclear staining.



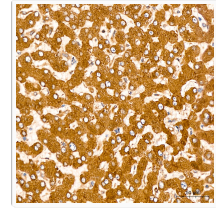
Immunohistochemistry analysis of EEF1D in paraffin-embedded Rat kidney tissue using EEF1D Rabbit polyclonal antibody (STJ23477) at a dilution of 1:200 (40x lens). High pressure antigen retrieval was performed with 0.01 M citrate buffer (pH 6.0) prior to immunohistochemistry staining.



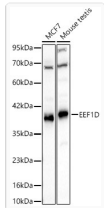
Immunohistochemistry analysis of EEF1D in paraffin-embedded Mouse brain tissue using EEF1D Rabbit polyclonal antibody (STJ23477) at a dilution of 1:200 (40x lens). High pressure antigen retrieval was performed with 0.01 M citrate buffer (pH 6.0) prior to immunohistochemistry staining.



Immunohistochemistry analysis of EEF1D in paraffin-embedded Human kidney tissue using EEF1D Rabbit polyclonal antibody (STJ23477) at a dilution of 1:200 (40x lens). High pressure antigen retrieval was performed with 0.01 M citrate buffer (pH 6.0) prior to immunohistochemistry staining.



Immunohistochemistry analysis of EEF1D in paraffin-embedded Human liver tissue using EEF1D Rabbit polyclonal antibody (STJ23477) at a dilution of 1:200 (40x lens). High pressure antigen retrieval was performed with 0.01 M citrate buffer (pH 6.0) prior to immunohistochemistry staining.



Western blot analysis of various lysates using EEF1D Rabbit polyclonal antibody (STJ23477) at 1:2000 dilution. Secondary antibody: HRP Goat Anti-Rabbit IgG (H+L) (STJS000856) at 1:10000 dilution. Lysates/ proteins: 25  $\mu$ g per lane. Blocking buffer: 3 % nonfat dry milk in TBST. Detection: ECL Basic Kit. Exposure time: 10s.