

## Anti-EDF1 antibody (1-148) (STJ23470)

### GENERAL INFORMATION

Product Type	Primary antibodies
Applications	WB/IHC-P/ELISA
Host / Source	Rabbit
Reactivity	Human/Mouse/Rat

### PRODUCT PROPERTIES

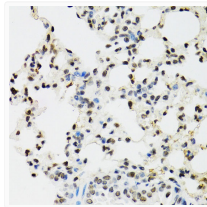
Clonality	Polyclonal
Concentration	Lot specific
Conjugation	Unconjugated
Purification	Affinity purification
Dilution Range	WB:1:500-1:2000 IHC-P:1:50-1:100 ELISA:Recommended starting concentration is 1 Mu g/mL. Please optimize the concentration based on your specific assay requirements.
Formulation	PBS with 0.02% Sodium Azide, 50% Glycerol, pH 7.3.
Isotype	IgG
Molecular Weight	Protein Mw: 16kDa Observed Mw: 16kDa
Storage Instruction	Store at -20°C for up to 1 year from the date of receipt, and avoid repeat freeze-thaw cycles.

### TARGET INFORMATION

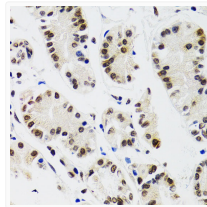
Gene ID	<a href="#">8721</a>
Gene Symbol	<a href="#">EDF1</a>
UniProt ID	<a href="#">EDF1_HUMAN</a>
Immunogen Region	1-148
Immunogen Sequence	MAESDWDVTVTLRKKGPTAA QAKSKQAILAAQRRGEDVET SKKWAAGONKQHSITKNTAK LDRETEELHHDVRTLEVGVKVIQQGRQSKGLTQKDLATKIN EKQVIADYESGRAIPNNQV LGKIERAIGLKLKRGKDIGKP IEKGPRAK
Specificity	Recombinant fusion protein containing a sequence corresponding to amino acids 1-148 of human EDF1 (NP_003783.1).

### ADDITIONAL INFORMATION

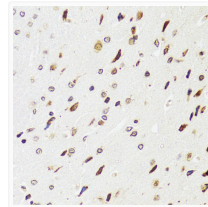
Note **STRICTLY FOR FURTHER SCIENTIFIC RESEARCH USE ONLY (RUO). MUST NOT TO BE USED IN DIAGNOSTIC OR THERAPEUTIC APPLICATIONS.**



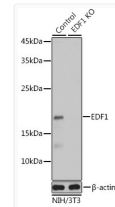
Immunohistochemistry analysis of EDF1 in paraffin-embedded mouse lung using [KO Validated] EDF1 Rabbit polyclonal antibody (STJ23470) at dilution of 1:100 (40x lens). Perform microwave antigen retrieval with 10 mM PBS buffer pH 7. 2 before commencing with immunohistochemistry staining protocol.



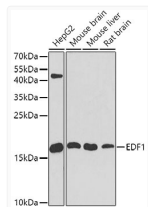
Immunohistochemistry analysis of EDF1 in paraffin-embedded human gastric cancer using [KO Validated] EDF1 Rabbit polyclonal antibody (STJ23470) at dilution of 1:100 (40x lens). Perform microwave antigen retrieval with 10 mM PBS buffer pH 7. 2 before commencing with immunohistochemistry staining protocol.



Immunohistochemistry analysis of EDF1 in paraffin-embedded rat brain using [KO Validated] EDF1 Rabbit polyclonal antibody (STJ23470) at dilution of 1:100 (40x lens). Perform microwave antigen retrieval with 10 mM PBS buffer pH 7. 2 before commencing with immunohistochemistry staining protocol.



Western blot analysis of lysates from wild type (WT) and EDF1 knockout (KO) NIH/3T3 cells, using [KO Validated] EDF1 Rabbit polyclonal antibody (STJ23470) at 1:1000 dilution. Secondary antibody: HRP Goat Anti-Rabbit IgG (H+L) (STJS000856) at 1:10000 dilution. Lysates/proteins: 25 Mu g per lane. Blocking buffer: 3% nonfat dry milk in TBST. Detection: ECL Basic Kit. Exposure time: 1s.



Western blot analysis of various lysates using [KO Validated] EDF1 Rabbit polyclonal antibody (STJ23470) at 1:1000 dilution. Secondary antibody: HRP Goat Anti-Rabbit IgG (H+L) (STJS000856) at 1:10000 dilution. Lysates/proteins: 25 Mu g per lane. Blocking buffer: 3% nonfat dry milk in TBST. Detection: ECL Basic Kit. Exposure time: 90s.