

## Anti-EC11 antibody (63-302) (STJ23465)

### GENERAL INFORMATION

Product Type	Primary antibodies
Applications	WB/IHC-P/IF/ICC/ELISA
Host / Source	Rabbit
Reactivity	Human/Mouse

### PRODUCT PROPERTIES

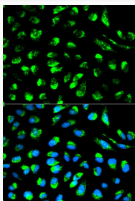
Clonality	Polyclonal
Concentration	Lot specific
Conjugation	Unconjugated
Purification	Affinity purification
Dilution Range	WB:1:500-1:2000 IHC-P:1:50-1:200 IF/CC:1:50-1:200 ELISA:Recommended starting concentration is 1 Mu g/mL. Please optimize the concentration based on your specific assay requirements.
Formulation	PBS with 0.02% Sodium Azide, 50% Glycerol, pH 7.3.
Isotype	IgG
Molecular Weight	Protein Mw: 33kDa Observed Mw: 33kDa
Storage Instruction	Store at -20°C for up to 1 year from the date of receipt, and avoid repeat freeze-thaw cycles.

### TARGET INFORMATION

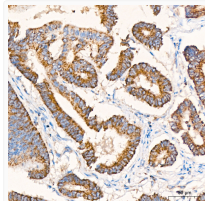
Gene ID	<a href="#">1632</a>
Gene Symbol	<a href="#">EC11</a>
UniProt ID	<a href="#">EC11_HUMAN</a>
Immunogen Region	63-302
Immunogen Sequence	KNPPVNSLSLEFLTELVISL EKLENDKSFGRVILTSRPG VFSAGLDLTEMCGRSPAHYA GYWKAVQELWRLRYQSNLVL VSAINGACPAGGCLVALTCD YRILADNPRYICGLNETQLG IAPFWLKDLENTIGHRAA ERALQLGLLFPPEALQVGI VDQVVPPEEQVQSTALSIAQ WMAIPDHARQLTKAMMRKAT ASRLVTQRDADVQNFVFSIS KDSIQKSLQMYLERLKEEK
Specificity	Recombinant fusion protein containing a sequence corresponding to amino acids 63-302 of human EC11 (NP_001910.2).

### ADDITIONAL INFORMATION

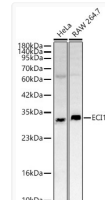
Note STRICTLY FOR FURTHER SCIENTIFIC RESEARCH USE ONLY (RUO). MUST NOT TO BE USED IN DIAGNOSTIC OR THERAPEUTIC APPLICATIONS.



Immunofluorescence analysis of HeLa cells using EC11 Rabbit polyclonal antibody (STJ23465). Secondary antibody: Cy3 Goat Anti-Rabbit IgG (H+L) at 1:500 dilution. Blue: DAPI for nuclear staining.



Immunohistochemistry analysis of EC11 in paraffin-embedded human colon carcinoma tissue using EC11 Rabbit polyclonal antibody (STJ23465) at a dilution of 1:200 (40x lens). High pressure antigen retrieval was performed with 0.01 M citrate buffer (pH 6.0) prior to immunohistochemistry staining.



Western blot analysis of various lysates using EC11 Rabbit polyclonal antibody (STJ23465) at 1:2000 dilution. Secondary antibody: HRP Goat Anti-Rabbit IgG (H+L) (STJS000856) at 1:10000 dilution. Lysates/ proteins: 25 Mu g per lane. Blocking buffer: 3 % nonfat dry milk in TBST. Detection: ECL Basic Kit. Exposure time: 45s.