

Anti-DNM2 antibody (607-866) (STJ23410)

GENERAL INFORMATION

Product Type	Primary antibodies
Applications	WB/IF/ICC/ELISA
Host / Source	Rabbit
Reactivity	Human/Mouse/Rat

PRODUCT PROPERTIES

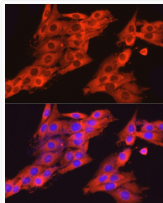
Clonality	Polyclonal
Concentration	Lot specific
Conjugation	Unconjugated
Purification	Affinity purification
Dilution Range	WB:1:500-1:2000 IF/ICC:1:50-1:200 ELISA:Recommended starting concentration is 1 μ g/mL. Please optimize the concentration based on your specific assay requirements.
Formulation	PBS with 0.02% Sodium Azide, 50% Glycerol, pH 7.3.
Isotype	IgG
Molecular Weight	Protein Mw: 98kDa Observed Mw: 110kDa
Storage Instruction	Store at -20°C for up to 1 year from the date of receipt, and avoid repeat freeze-thaw cycles.

TARGET INFORMATION

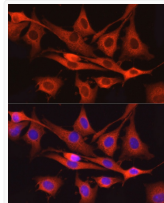
Gene ID	1785
Gene Symbol	DNM2
UniProt ID	DYN2_HUMAN
Immunogen Region	607-866
Immunogen Sequence	EDVDSWKASFLRAGVYPEKD QAENEDGAQENTFSMDPQLE RQVETIRNLVDSYVAIINKS IRDLMPKTIMHLMINNTKAF IHHELLAYLYSSADQSSLME ESADQAQRDDMLRMYHALK EALNIIGDISTSTVSTPVPP PVDDTWLQASASSHSPTPQRR PVSSIHPPGRPPAVRGPTPG PPLIPVPVGAASFSAPPPI SRPGPQSVFANSDLFPAPPQ IPSRPVRIPPGIPPGVPSR
Specificity	Recombinant fusion protein containing a sequence corresponding to amino acids 607-866 of human DN2 (NP_004936.2).

ADDITIONAL INFORMATION

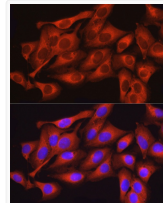
Note STRICTLY FOR FURTHER SCIENTIFIC RESEARCH USE ONLY (RUO). MUST NOT TO BE USED IN DIAGNOSTIC OR THERAPEUTIC APPLICATIONS.



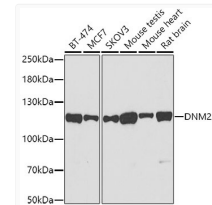
Immunofluorescence analysis of PC-12 cells using DNM2 antibody (STJ23410) at dilution of 1:150. Blue: DAPI for nuclear staining.



Immunofluorescence analysis of NIH/3T3 cells using DNM2 antibody (STJ23410) at dilution of 1:150. Blue: DAPI for nuclear staining.



Immunofluorescence analysis of U2OS cells using DNM2 antibody (STJ23410) at dilution of 1:150. Blue: DAPI for nuclear staining.



Western blot analysis of extracts of various cell lines, using DNM2 antibody (STJ23410) at 1:500 dilution. Secondary antibody: HRP Goat Anti-Rabbit IgG (H+L) (STJS000856) at 1:10000 dilution. Lysates/proteins: 25 μ g per lane. Blocking buffer: 3% nonfat dry milk in TBST. Detection: ECL Basic Kit. Exposure time: 90s.