

Anti-DLK1 antibody (24-303) (STJ23392)

GENERAL INFORMATION

Product Type	Primary antibodies
Applications	WB/IHC-P/IF/ICC/ELISA
Host / Source	Rabbit
Reactivity	Human/Mouse/Rat

PRODUCT PROPERTIES

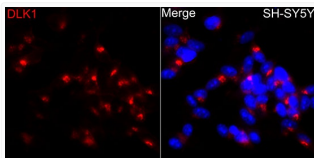
Clonality	Polyclonal
Concentration	Lot specific
Conjugation	Unconjugated
Purification	Affinity purification
Dilution Range	WB:1:500-1:2000 IHC-P:1:50-1:100 IF/ICC:1:50-1:100 ELISA:Recommended starting concentration is 1 Mu g/mL. Please optimize the concentration based on your specific assay requirements.
Formulation	PBS with 0.02% Sodium Azide, 50% Glycerol, pH 7.3.
Isotype	IgG
Molecular Weight	Protein Mw: 41kDa Observed Mw: 41kDa/
Storage Instruction	Store at -20°C for up to 1 year from the date of receipt, and avoid repeat freeze-thaw cycles.

TARGET INFORMATION

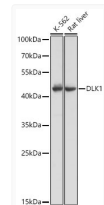
Gene ID	8788
Gene Symbol	DLK1
UniProt ID	DLK1_HUMAN
Immunogen Region	24-303
Immunogen Sequence	AECFPACNPQNGFCEDDNVC RCQPGWQGPLCDQCVTSPGC LHGLCGEPGQCICTDGWDGE LCDRDVRACSSAPCANNRTC VSLDDGLYECSCAPGYSGKD CQKKGPCVINGSPCQHGGT CVDDEGRASHASCLOPPGFS GNFCIVANSCTPNPCENDG VCTDIGGDFRCRCPAGFIDK TCSRPTVTCASSPCQNGGTC LQHTQVSYECLCKPEFTGLT CVKKRALSPQQVTRLPSTGY
Specificity	Recombinant fusion protein containing a sequence corresponding to amino acids 24-303 of human DLK1 (P80370).

ADDITIONAL INFORMATION

Note **STRICTLY FOR FURTHER SCIENTIFIC RESEARCH USE ONLY (RUO). MUST NOT TO BE USED IN DIAGNOSTIC OR THERAPEUTIC APPLICATIONS.**



Immunofluorescence analysis of SH-SY5Y cells using DLK1 Rabbit polyclonal antibody (STJ23392) at dilution of 1:200 (40x lens). Secondary antibody: Cy3 Goat Anti-Rabbit IgG (H+L) at 1:500 dilution. Blue: DAPI for nuclear staining.



Western blot analysis of various lysates using DLK1 Rabbit polyclonal antibody (STJ23392) at 1:1000 dilution. Secondary antibody:HRP Goat Anti-Rabbit IgG (H+L) (STJS000856) at 1:10000 dilution. Lysates/ proteins: 25 Mu g per lane. Blocking buffer: 3 % nonfat dry milk in TBST. Detection:ECL Basic Kit. Exposure time: 30s.