

## Anti-DLC1 antibody (204-463) (STJ23388)

### GENERAL INFORMATION

Product Type	Primary antibodies
Applications	WB/ELISA
Host / Source	Rabbit
Reactivity	Mouse/Rat

### PRODUCT PROPERTIES

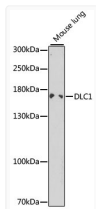
Clonality	Polyclonal
Concentration	Lot specific
Conjugation	Unconjugated
Purification	Affinity purification
Dilution Range	WB:1:500-1:2000 ELISA:Recommended starting concentration is 1 µg/mL. Please optimize the concentration based on your specific assay requirements.
Formulation	PBS with 0.02% Sodium Azide, 50% Glycerol, pH 7.3.
Isotype	IgG
Molecular Weight	Protein Mw: 171kDa Observed Mw: 171kDa
Storage Instruction	Store at -20°C for up to 1 year from the date of receipt, and avoid repeat freeze-thaw cycles.

### TARGET INFORMATION

Gene ID	<a href="#">10395</a>
Gene Symbol	<a href="#">DLC1</a>
UniProt ID	<a href="#">RHG07_HUMAN</a>
Immunogen Region	204-463
Immunogen Sequence	DAPKVNVDTLNVKDIAPEK QLLNSAVIAQRRKPDPPKD ENERSTCNVVQNEFLDTPCT NRGLPLLKTDGSCLLQPPS CPNGMSAENGLKSGFSQHQ NKSPPKVKAEDGMQCLQLKE TLATQEPTDNQVRLRKRKEI REDRDRARLDSMVLIMKLD QLDQDIENALSTSSSPSGTP TNLRRHVPDLESGSESGADT ISVNQTRVNLSSDTESTDLP SSTPVANSGTKPKTTAIQG
Specificity	Recombinant fusion protein containing a sequence corresponding to amino acids 204-463 of human DLC1 (NP_079043.3).

### ADDITIONAL INFORMATION

Note **STRICTLY FOR FURTHER SCIENTIFIC RESEARCH USE ONLY (RUO). MUST NOT TO BE USED IN DIAGNOSTIC OR THERAPEUTIC APPLICATIONS.**



Western blot analysis of extracts of mouse lung, using DLC1 antibody (STJ23388) at 1:1000 dilution. Secondary antibody: HRP Goat Anti-Rabbit IgG (H+L) (STJS000856) at 1:10000 dilution. Lysates/proteins: 25 µg per lane. Blocking buffer: 3% nonfat dry milk in TBST. Detection: ECL Enhanced Kit.