

Anti-DDX58 antibody (825-925) (STJ23363)

GENERAL INFORMATION

Product Type	Primary antibodies
Applications	WB/ELISA
Host / Source	Rabbit
Reactivity	Human/Rat

PRODUCT PROPERTIES

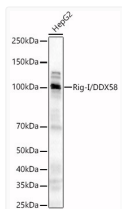
Clonality	Polyclonal
Concentration	Lot specific
Conjugation	Unconjugated
Purification	Affinity purification
Dilution Range	WB:1:2000-1:4000 ELISA:Recommended starting concentration is 1 Mu g/mL. Please optimize the concentration based on your specific assay requirements.
Formulation	PBS with 0.09% Sodium Azide, 50% Glycerol, pH7.3.
Isotype	IgG
Molecular Weight	Protein Mw: 107kDa Observed Mw: 107kDa
Storage Instruction	Store at -20°C for up to 1 year from the date of receipt, and avoid repeat freeze-thaw cycles.

TARGET INFORMATION

Gene ID	23586
Gene Symbol	RIGI
UniProt ID	RIGI_HUMAN
Immunogen Region	825-925
Immunogen Sequence	VIEECHYTVLGDADFKECFVS RPHPKPKQFSSFEKRAKIFC ARQNCSDHWGIHVKYKTFEI PVIKIESFVVEDIATGVQTL YSKWKDFHFKEKIPFDPAEMS K
Specificity	A synthetic peptide corresponding to a sequence within amino acids 825-925 of human Rig-I/DDX58 (NP_055129.2).

ADDITIONAL INFORMATION

Note STRICTLY FOR FURTHER SCIENTIFIC RESEARCH USE ONLY (RUO). MUST NOT TO BE USED IN DIAGNOSTIC OR THERAPEUTIC APPLICATIONS.



Western blot analysis of lysates from HepG2 cells, using Rig-I/DDX58 Rabbit polyclonal antibody (STJ23363) at 1:4000 dilution. Secondary antibody: HRP Goat Anti-Rabbit IgG (H+L) (STJS000856) at 1:10000 dilution. Lysates/proteins: 25 Mu g per lane. Blocking buffer: 3% nonfat dry milk in TBST. Detection: ECL Basic Kit. Exposure time: 90s.