

Anti-DDB1 antibody (741-1140) (STJ23352)

GENERAL INFORMATION

Product Type	Primary antibodies
Applications	WB/IHC-P/IF/ICC/ELISA
Host / Source	Rabbit
Reactivity	Human/Mouse/Rat

PRODUCT PROPERTIES

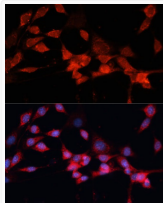
Clonality	Polyclonal
Concentration	Lot specific
Conjugation	Unconjugated
Purification	Affinity purification
Dilution Range	WB:1:500-1:1000 IHC-P:1:50-1:100 IF/ICC:1:50-1:100 ELISA:Recommended starting concentration is 1 μ g/mL. Please optimize the concentration based on your specific assay requirements.
Formulation	PBS with 0.09% Sodium Azide, 50% Glycerol, pH 7.3.
Isotype	IgG
Molecular Weight	Protein Mw: 127kDa Observed Mw: 127kDa
Storage Instruction	Store at -20°C for up to 1 year from the date of receipt, and avoid repeat freeze-thaw cycles.

TARGET INFORMATION

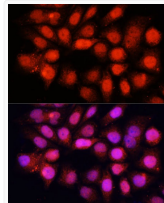
Gene ID	1642
Gene Symbol	DDB1
UniProt ID	DDB1_HUMAN
Immunogen Region	741-1140
Immunogen Sequence	EVQDTSGGTTALRPSASTQA LSSSVSSSKLFSSTAPHET SFGEEVEVHLLIIDQHTFE VLHAHQFLQNEYALSLVSCK LGKDPNTYFIVGTAMVYPEE AEPKQGRIVVFQYSDGKLT VAEKEVKGAVYSMVEFNGKL LASINSTVRLYEWTTEKELR TECNHYNINIMALYLKTKGDF ILVGDLMRSVLLLAYKPMEG NFEEIARDFNPNWMSAVEIL DDDNFLGAENAFNLFVCQK
Specificity	A synthetic peptide corresponding to a sequence within amino acids 741-1140 of human DDB1 (NP_001914.3).

ADDITIONAL INFORMATION

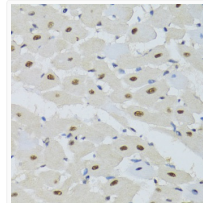
Note **STRICTLY FOR FURTHER SCIENTIFIC RESEARCH USE ONLY (RUO). MUST NOT TO BE USED IN DIAGNOSTIC OR THERAPEUTIC APPLICATIONS.**



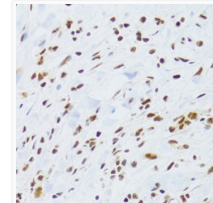
Immunofluorescence analysis of NIH-3T3 cells using DDB1 Polyclonal Antibody (STJ23352) at dilution of 1:100 (40x lens). Blue: DAPI for nuclear staining.



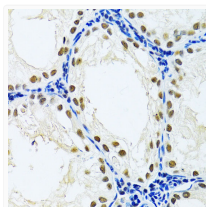
Immunofluorescence analysis of HeLa cells using DDB1 Polyclonal Antibody (STJ23352) at dilution of 1:100 (40x lens). Blue: DAPI for nuclear staining.



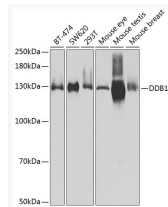
Immunohistochemistry analysis of paraffin-embedded mouse heart using DDB1 Antibody (STJ23352) at dilution of 1:100 (40x lens). Perform microwave antigen retrieval with 10 mM PBS buffer pH 7.2 before commencing with immunohistochemistry staining protocol.



Immunohistochemistry analysis of paraffin-embedded human gastric cancer using DDB1 Antibody (STJ23352) at dilution of 1:100 (40x lens). Perform microwave antigen retrieval with 10 mM PBS buffer pH 7.2 before commencing with immunohistochemistry staining protocol.



Immunohistochemistry analysis of paraffin-embedded rat testis using DDB1 Antibody (STJ23352) at dilution of 1:100 (40x lens). Perform microwave antigen retrieval with 10 mM PBS buffer pH 7.2 before commencing with immunohistochemistry staining protocol.



Western blot analysis of extracts of various cell lines, using DDB1 Antibody (STJ23352) at 1:500 dilution. Secondary antibody: HRP Goat Anti-Rabbit IgG (H+L) (STJS000856) at 1:10000 dilution. Lysates/proteins: 25 μ g per lane. Blocking buffer: 3% nonfat dry milk in TBST. Detection: ECL Basic Kit. Exposure time: 30s.