

Anti-DCK antibody (1-260) (STJ23344)

GENERAL INFORMATION

Product Type	Primary antibodies
Applications	WB/IHC-P/IF/ICC/ELISA
Host / Source	Rabbit
Reactivity	Human/Mouse/Rat

PRODUCT PROPERTIES

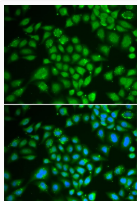
Clonality	Polyclonal
Concentration	Lot specific
Conjugation	Unconjugated
Purification	Affinity purification
Dilution Range	WB:1:1000-1:5000 IHC-P:1:50-1:200 IF/CC:1:50-1:200 ELISA:Recommended starting concentration is 1 Mu g/mL. Please optimize the concentration based on your specific assay requirements.
Formulation	PBS with 0.02% Sodium Azide, 50% Glycerol, pH 7.3.
Isotype	IgG
Molecular Weight	Protein Mw: 31kDa Observed Mw: 31kDa
Storage Instruction	Store at -20°C for up to 1 year from the date of receipt, and avoid repeat freeze-thaw cycles.

TARGET INFORMATION

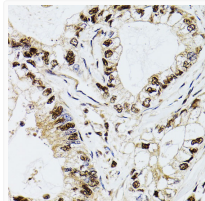
Gene ID	1633
Gene Symbol	DCK
UniProt ID	DCK_HUMAN
Immunogen Region	1-260
Immunogen Sequence	MATPPKRSCPSFSASSEGTR IKKISIEGNIAGKSTFVNI LKQLCEDWEVPEPVARWCN VQSTQDEFEEELMSQKNGGN VLQMMYEKPERWSFTFQTYA CLSRIRAQLASLNGKLDKDAE KPVLLFFERSVYSDRYIFASN LYSECMNETEWYTIYQDWHW WMNNQFGQSLELDGIYLQA TPETCLHRIYLRGRNEEQGI PLEYLEKLHYKHESWLLHRT LKTNFDYLQEVPIITLDVN
Specificity	Recombinant fusion protein containing a sequence corresponding to amino acids 1-260 of human DCK (NP_000779.1).

ADDITIONAL INFORMATION

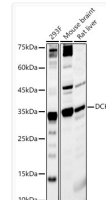
Note STRICTLY FOR FURTHER SCIENTIFIC RESEARCH USE ONLY (RUO). MUST NOT TO BE USED IN DIAGNOSTIC OR THERAPEUTIC APPLICATIONS.



Immunofluorescence analysis of HeLa cells using DCK antibody (STJ23344). Blue: DAPI for nuclear staining.



Immunohistochemistry analysis of paraffin-embedded human gastric cancer using DCK antibody (STJ23344) at dilution of 1:100 (40x lens). Perform microwave antigen retrieval with 10 mM PBS buffer pH 7.2 before commencing with immunohistochemistry staining protocol.



Western blot analysis of various lysates, using DCK Rabbit polyclonal antibody (STJ23344) at 1:2000 dilution. Secondary antibody: HRP Goat Anti-Rabbit IgG (H+L) (STJS000856) at 1:10000 dilution. Lysates/proteins: 25 Mu g per lane. Blocking buffer: 3% nonfat dry milk in TBST. Detection: ECL Basic Kit. Exposure time: 60s.