

Anti-CYLD antibody (654-953) (STJ23310)

GENERAL INFORMATION

Product Type	Primary antibodies
Applications	WB/IHC-P/ELISA
Host / Source	Rabbit
Reactivity	Human/Mouse/Rat

PRODUCT PROPERTIES

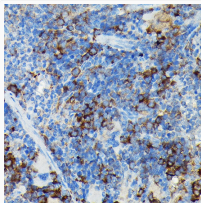
Clonality	Polyclonal
Concentration	Lot specific
Conjugation	Unconjugated
Purification	Affinity purification
Dilution Range	WB:1:100-1:500 IHC-P:1:50-1:200 ELISA:Recommended starting concentration is 1 µg/mL. Please optimize the concentration based on your specific assay requirements.
Formulation	PBS with 0.02% Sodium Azide, 50% Glycerol, pH 7.3.
Isotype	IgG
Molecular Weight	Protein Mw: 107kDa Observed Mw: 107kDa
Storage Instruction	Store at -20°C for up to 1 year from the date of receipt, and avoid repeat freeze-thaw cycles.

TARGET INFORMATION

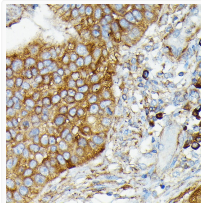
Gene ID	1540
Gene Symbol	CYLD
UniProt ID	CYLD_HUMAN
Immunogen Region	654-953
Immunogen Sequence	TKIMKLRKILEKVEAASGFT SEEKDPEEFLNLFHHILRV EPLLKIRSAGQKVQDCYFYQ IFMEKNEKVGVPYTIQQLLEW SFINSNLKFAEAPSCLIQM PRFGKDFKLFKKIFPSLELN ITDILLEDTPRQCRCIGGLAM YECRECYDDPDISAGKIKQF CKTNTQVHLHPKRLNHKYN PVSLPKDLDPDWDWRHGICPC QNMELFAVLCIETSHYVAFV KYGKDDSAWLFFDSMADR
Specificity	Recombinant fusion protein containing a sequence corresponding to amino acids 654-953 of human CYLD (NP_001035877.1).

ADDITIONAL INFORMATION

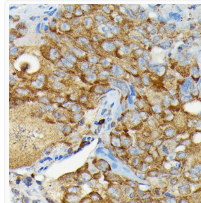
Note **STRICTLY FOR FURTHER SCIENTIFIC RESEARCH USE ONLY (RUO). MUST NOT TO BE USED IN DIAGNOSTIC OR THERAPEUTIC APPLICATIONS.**



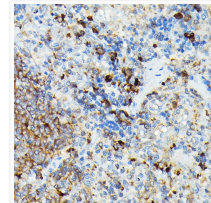
Immunohistochemistry analysis of CYLD in paraffin-embedded mouse spleen using CYLD Rabbit polyclonal antibody (STJ23310) at dilution of 1:100 (40x lens). Perform high pressure antigen retrieval with 10 mM citrate buffer pH 6.0 before commencing with immunohistochemistry staining protocol.



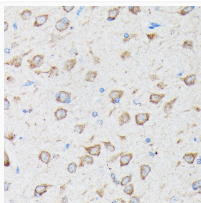
Immunohistochemistry analysis of CYLD in paraffin-embedded human esophageal cancer using CYLD Rabbit polyclonal antibody (STJ23310) at dilution of 1:100 (40x lens). Perform high pressure antigen retrieval with 10 mM citrate buffer pH 6.0 before commencing with immunohistochemistry staining protocol.



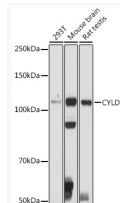
Immunohistochemistry analysis of CYLD in paraffin-embedded human lung cancer using CYLD Rabbit polyclonal antibody (STJ23310) at dilution of 1:100 (40x lens). Perform high pressure antigen retrieval with 10 mM citrate buffer pH 6.0 before commencing with immunohistochemistry staining protocol.



Immunohistochemistry analysis of CYLD in paraffin-embedded rat spleen using CYLD Rabbit polyclonal antibody (STJ23310) at dilution of 1:100 (40x lens). Perform high pressure antigen retrieval with 10 mM citrate buffer pH 6.0 before commencing with immunohistochemistry staining protocol.



Immunohistochemistry analysis of CYLD in paraffin-embedded rat brain using CYLD Rabbit polyclonal antibody (STJ23310) at dilution of 1:100 (40x lens). Perform high pressure antigen retrieval with 10 mM citrate buffer pH 6.0 before commencing with immunohistochemistry staining protocol.



Western blot analysis of various lysates using CYLD Rabbit polyclonal antibody (STJ23310) at 1:500 dilution. Secondary antibody: HRP Goat Anti-Rabbit IgG (H+L) (STJS000856) at 1:10000 dilution. Lysates/proteins: 25 µg per lane. Blocking buffer: 3% nonfat dry milk in TBST. Detection: ECL Basic Kit. Exposure time: 90s.