

Anti-CYBB antibody (385-570) (STJ23306)

GENERAL INFORMATION

Product Type	Primary antibodies
Applications	WB/IHC-P/IF/ICC/ELISA
Host / Source	Rabbit
Reactivity	Human/Mouse/Rat

PRODUCT PROPERTIES

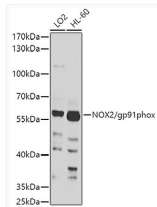
Clonality	Polyclonal
Concentration	Lot specific
Conjugation	Unconjugated
Purification	Affinity purification
Dilution Range	WB:1:500-1:1000 IHC-P:1:50-1:200 IF/CC:1:50-1:200 ELISA:Recommended starting concentration is 1 Mu g/mL. Please optimize the concentration based on your specific assay requirements.
Formulation	PBS with 0.09% Sodium Azide, 50% Glycerol, pH7.3.
Isotype	IgG
Molecular Weight	Protein Mw: 65kDa Observed Mw: 65kDa
Storage Instruction	Store at -20°C for up to 1 year from the date of receipt, and avoid repeat freeze-thaw cycles.

TARGET INFORMATION

Gene ID	1536
Gene Symbol	CYBB
UniProt ID	CY24B_HUMAN
Immunogen Region	385-570
Immunogen Sequence	IAVDGPFPGTASEDVFSYEVV MLVGAGIGVTPFASILKSVW YKVCNNATNLKLLKIIYFYWL CRDTHAFEFWADLLQLLESQ MQERNNAGFLSYNIYLTGWD ESQANHFVAVHHDEEKDVITG LKQKTLYGRPNWDNEFKTIA SQHPNTRIGVFLCGPEALAE TLSKQSIGNSSESGPRGVHFI FNKENF
Specificity	A synthetic peptide corresponding to a sequence within amino acids 385-570 of human NOX2/gp91phox (NP_000388.2).

ADDITIONAL INFORMATION

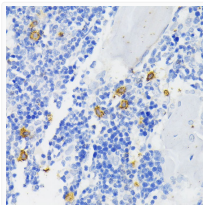
Note STRICTLY FOR FURTHER SCIENTIFIC RESEARCH USE ONLY (RUO). MUST NOT TO BE USED IN DIAGNOSTIC OR THERAPEUTIC APPLICATIONS.



Western blot analysis of various lysates using NOX2/gp91phox Rabbit pAb (STJ23306) at 1:1000 dilution.

Secondary antibody: HRP-conjugated Goat anti-Rabbit IgG (H+L) (STJS000856) at 1:10000 dilution.

Lysates/proteins: 25 Mu g per lane.
Blocking buffer: 3% nonfat dry milk in TBST.
Detection: ECL Basic Kit
Exposure time: 60s.



Immunohistochemistry analysis of paraffin-embedded Rat bone marrow using NOX2/gp91phox Rabbit pAb (STJ23306) at dilution of 1:200 (40x lens). Microwave antigen retrieval performed with 0.01M PBS Buffer (pH 7.2) prior to immunohistochemistry staining.