

Anti-CX3CR1 antibody (100-200) (STJ23295)

GENERAL INFORMATION

Product Type	Primary antibodies
Applications	WB/IHC-P/ELISA
Host / Source	Rabbit
Reactivity	Human/Mouse/Rat

PRODUCT PROPERTIES

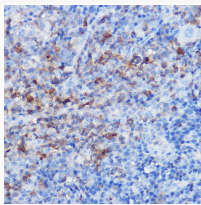
Clonality	Polyclonal
Concentration	Lot specific
Conjugation	Unconjugated
Purification	Affinity purification
Dilution Range	WB:1:500-1:1000 IHC-P:1:50-1:200 ELISA:Recommended starting concentration is 1 μ g/mL. Please optimize the concentration based on your specific assay requirements.
Formulation	PBS with 0.05% Proclin300, 50% Glycerol, pH 7.3.
Isotype	IgG
Molecular Weight	Protein Mw: 40kDa Observed Mw: 52kDa
Storage Instruction	Store at -20°C for up to 1 year from the date of receipt, and avoid repeat freeze-thaw cycles.

TARGET INFORMATION

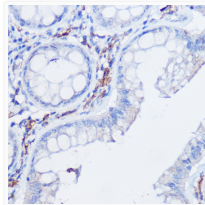
Gene ID	1524
Gene Symbol	CX3CR1
UniProt ID	CX3C1_HUMAN
Immunogen Region	100-200
Immunogen Sequence	AMCKFTTAFFFIGFFGSIFF ITVISIDRYLAIVLAANSMN NRTVQHGVITISLGVWAAAIL VAAPQFMFTKQKENECLGDY PEVLQEIWPVLRNVETNFLG F
Specificity	A synthetic peptide corresponding to a sequence within amino acids 100-200 of human CX3CR1 (NP_001328.1).

ADDITIONAL INFORMATION

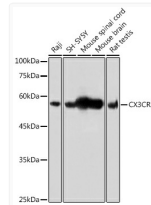
Note **STRICTLY FOR FURTHER SCIENTIFIC RESEARCH USE ONLY (RUO). MUST NOT TO BE USED IN DIAGNOSTIC OR THERAPEUTIC APPLICATIONS.**



Immunohistochemistry analysis of CX3CR1 in paraffin-embedded rat spleen using CX3CR1 Rabbit polyclonal antibody (STJ23295) at dilution of 1:20 (40x lens). Perform microwave antigen retrieval with 50 mM Tris/EDTA buffer pH 8.0 before commencing with immunohistochemistry staining protocol.



Immunohistochemistry analysis of CX3CR1 in paraffin-embedded human colon carcinoma using CX3CR1 Rabbit polyclonal antibody (STJ23295) at dilution of 1:20 (40x lens). Perform microwave antigen retrieval with 50 mM Tris/EDTA buffer pH 8.0 before commencing with immunohistochemistry staining protocol.



Western blot analysis of various lysates using CX3CR1 Rabbit polyclonal antibody (STJ23295) at 1:500 dilution. Secondary antibody: HRP Goat Anti-Rabbit IgG (H+L) (STJS000856) at 1:10000 dilution. Lysates/proteins: 25 μ g per lane. Blocking buffer: 3% nonfat dry milk in TBST. Detection: ECL Basic Kit. Exposure time: 1s.