

## Anti-CUX1 antibody (1-280) (STJ23294)

### GENERAL INFORMATION

Product Type	Primary antibodies
Applications	WB/IHC-P/IF/ICC/ELISA
Host / Source	Rabbit
Reactivity	Human/Mouse/Rat

### PRODUCT PROPERTIES

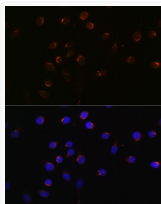
Clonality	Polyclonal
Concentration	Lot specific
Conjugation	Unconjugated
Purification	Affinity purification
Dilution Range	WB:1:500-1:1000 IHC-P:1:50-1:200 IF/ICC:1:50-1:200 ELISA:Recommended starting concentration is 1 µg/mL. Please optimize the concentration based on your specific assay requirements.
Formulation	PBS with 0.02% Sodium Azide, 50% Glycerol, pH 7.3.
Isotype	IgG
Molecular Weight	Protein Mw: 72-77kDa/147-165kDa Observed Mw: 200kDa
Storage Instruction	Store at -20°C for up to 1 year from the date of receipt, and avoid repeat freeze-thaw cycles.

### TARGET INFORMATION

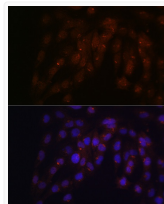
Gene ID	<a href="#">1523</a> <a href="#">1523</a>
Gene Symbol	<a href="#">CUX1</a> <a href="#">CUX1</a>
UniProt ID	<a href="#">CUX1_HUMAN</a> <a href="#">CASP_HUMAN</a>
Immunogen Region	1-280
Immunogen Sequence	MAANVGSMFYWKRFDLQQL QRELDATATVLNLRQDESEQ SRKRLIEQSREFKKNTPEDL RKQVAPLLKSFQGEIDALSK RSKEAEAAFLNVYKRLIDVP DPVPALDLGQQQLKLVQRLH DIETENQKLRETLEEYNKEF AEVKNQEVTIKALKEKIREY EQTLKNQAETIALEKEQKLQ NDFAEKERKLQETQMSTTSK LEEAEHKVQSLQTALEKTRT ELFDLTKTYDEETTAKADE
Specificity	Recombinant fusion protein containing a sequence corresponding to amino acids 1-280 of human CUX1 (NP_001189472.1).

### ADDITIONAL INFORMATION

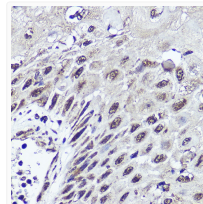
Note **STRICTLY FOR FURTHER SCIENTIFIC RESEARCH USE ONLY (RUO). MUST NOT TO BE USED IN DIAGNOSTIC OR THERAPEUTIC APPLICATIONS.**



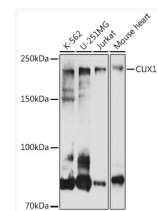
Immunofluorescence analysis of L929 cells using CUX1 antibody (STJ23294) at dilution of 1:100. Blue: DAPI for nuclear staining.



Immunofluorescence analysis of C6 cells using CUX1 antibody (STJ23294) at dilution of 1:100. Blue: DAPI for nuclear staining.



Immunohistochemistry analysis of paraffin-embedded human esophageal cancer using CUX1 antibody (STJ23294) at dilution of 1:200 (40x lens). Perform high pressure antigen retrieval with 10 mM citrate buffer pH 6.0 before commencing with immunohistochemistry staining protocol.



Western blot analysis of extracts of various cell lines, using CUX1 antibody (STJ23294) at 1:1000 dilution. Secondary antibody: HRP Goat Anti-Rabbit IgG (H+L) (STJS000856) at 1:10000 dilution. Lysates/proteins: 25 µg per lane. Blocking buffer: 3% nonfat dry milk in TBST. Detection: ECL Basic Kit. Exposure time: 30s.