

## Anti-CTNND1 antibody (850-968) (STJ23273)

### GENERAL INFORMATION

Product Type	Primary antibodies
Applications	WB/IHC-P/ELISA
Host / Source	Rabbit
Reactivity	Human/Mouse/Rat

### PRODUCT PROPERTIES

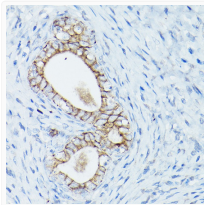
Clonality	Polyclonal
Concentration	Lot specific
Conjugation	Unconjugated
Purification	Affinity purification
Dilution Range	WB:1:500-1:2000 IHC-P:1:50-1:200 ELISA:Recommended starting concentration is 1 µg/mL. Please optimize the concentration based on your specific assay requirements.
Formulation	PBS with 0.01% Thimerosal, 50% Glycerol, pH 7.3.
Isotype	IgG
Molecular Weight	Protein Mw: 108kDa Observed Mw: 101kDa
Storage Instruction	Store at -20°C for up to 1 year from the date of receipt, and avoid repeat freeze-thaw cycles.

### TARGET INFORMATION

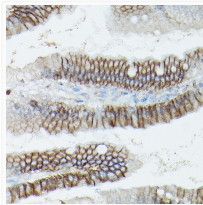
Gene ID	<a href="#">1500</a>
Gene Symbol	<a href="#">CTNND1</a>
UniProt ID	<a href="#">CTND1_HUMAN</a>
Immunogen Region	850-968
Immunogen Sequence	QVNLNNSARSRQSSHSYDDST LPLIDRNQKSDKKPDREEIQ MSNMGSNTKSLDNNYSTPNE RGDHNRTLDRSGDLGDMPEPL KGTTPMLQDEGQESLEEELD VLVLDEGGQVSYPSMQKI
Specificity	Recombinant fusion protein containing a sequence corresponding to amino acids 850-968 of human Delta-Catenin/p120 Catenin (NP_001078927.1).

### ADDITIONAL INFORMATION

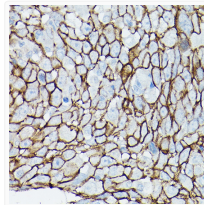
Note **STRICTLY FOR FURTHER SCIENTIFIC RESEARCH USE ONLY (RUO). MUST NOT TO BE USED IN DIAGNOSTIC OR THERAPEUTIC APPLICATIONS.**



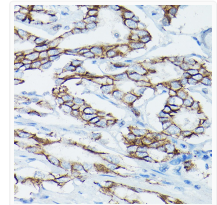
Immunohistochemistry analysis of Delta-Catenin/p120 Catenin in paraffin-embedded rat uterus using Delta-Catenin/p120 Catenin Rabbit polyclonal antibody (STJ23273) at dilution of 1:50 (40x lens). Perform high pressure antigen retrieval with 10 mM citrate buffer pH 6.0 before commencing with immunohistochemistry staining protocol.



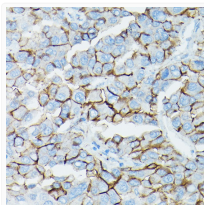
Immunohistochemistry analysis of Delta-Catenin/p120 Catenin in paraffin-embedded mouse colon using Delta-Catenin/p120 Catenin Rabbit polyclonal antibody (STJ23273) at dilution of 1:50 (40x lens). Perform high pressure antigen retrieval with 10 mM citrate buffer pH 6.0 before commencing with immunohistochemistry staining protocol.



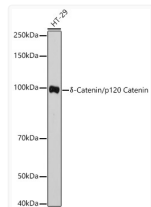
Immunohistochemistry analysis of Delta-Catenin/p120 Catenin in paraffin-embedded human urothelial carcinoma using Delta-Catenin/p120 Catenin Rabbit polyclonal antibody (STJ23273) at dilution of 1:50 (40x lens). Perform high pressure antigen retrieval with 10 mM citrate buffer pH 6.0 before commencing with immunohistochemistry staining protocol.



Immunohistochemistry analysis of Delta-Catenin/p120 Catenin in paraffin-embedded human prostate cancer using Delta-Catenin/p120 Catenin Rabbit polyclonal antibody (STJ23273) at dilution of 1:50 (40x lens). Perform high pressure antigen retrieval with 10 mM citrate buffer pH 6.0 before commencing with immunohistochemistry staining protocol.



Immunohistochemistry analysis of Delta-Catenin/p120 Catenin in paraffin-embedded human liver cancer using Delta-Catenin/p120 Catenin Rabbit polyclonal antibody (STJ23273) at dilution of 1:50 (40x lens). Perform high pressure antigen retrieval with 10 mM citrate buffer pH 6.0 before commencing with immunohistochemistry staining protocol.



Western blot analysis of lysates from HT-29 cells, using Delta-Catenin/p120 Catenin Rabbit polyclonal antibody (STJ23273) at 1:1000 dilution. Secondary antibody: HRP Goat Anti-Rabbit IgG (H+L) (STJS000856) at 1:10000 dilution. Lysates/proteins: 25µg per lane. Blocking buffer: 3% nonfat dry milk in TBST. Detection: ECL Basic Kit. Exposure time: 10s.