

Anti-CTCF antibody (1-260) (STJ23259)

GENERAL INFORMATION

Product Type	Primary antibodies
Applications	WB/IHC-P/IF/ICC/IP/ELISA/ChIP
Host / Source	Rabbit
Reactivity	Human/Mouse/Rat

PRODUCT PROPERTIES

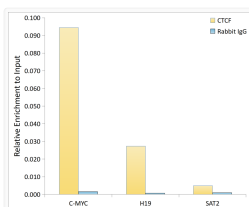
Clonality	Polyclonal
Concentration	Lot specific
Conjugation	Unconjugated
Purification	Affinity purification
Dilution Range	WB:1:500-1:1000 IHC-P:1:50-1:200 IF/CC:1:50-1:200 IP:0.5 Mu g-4 Mu g antibody for 200 Mu g-400 Mu g extracts of whole cells ELISA:Recommended starting concentration is 1 Mu g/mL. Please optimize the concentration based on your specif
Formulation	PBS with 0.09% Sodium Azide, 50% Glycerol, pH 7.3.
Isotype	IgG
Molecular Weight	Protein Mw: 83kDa Observed Mw: 140kDa
Storage Instruction	Store at -20°C for up to 1 year from the date of receipt, and avoid repeat freeze-thaw cycles.

TARGET INFORMATION

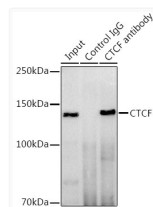
Gene ID	10664
Gene Symbol	CTCF
UniProt ID	CTCF_HUMAN
Immunogen Region	1-260
Immunogen Sequence	MEGDAVEAIVEESETFIK GK ERKTYQRREGGQEEDACHL PQNQTDGGEVVDVNSSVQM VMMEQLDPTLLQMKTEVMEG TVAPEAAVDDTQIITLQV VNMEEQPINIGELQLVQVPV PVTVPVATTSVEELQGAYEN EVSKEGLAESEPMICHTLPL PEGFQVVKVANGANGVETLEQ GELPPQEDPSWQKDPDYQPP AKTKKTKKSKLRYTEEGKD VDVSVYDFEEEQEGLLSE
Specificity	Recombinant fusion protein containing a sequence corresponding to amino acids 1-260 of human CTCF (NP_006556.1).

ADDITIONAL INFORMATION

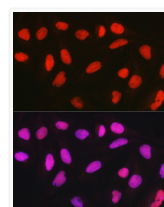
Note STRICTLY FOR FURTHER SCIENTIFIC RESEARCH USE ONLY (RUO). MUST NOT TO BE USED IN DIAGNOSTIC OR THERAPEUTIC APPLICATIONS.



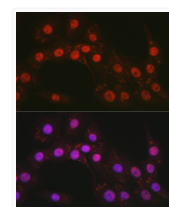
Chromatin immunoprecipitation analysis of extracts of HeLa cells, using CTCF antibody (STJ23259) and rabbit IgG. The amount of immunoprecipitated DNA was checked by quantitative PCR. Histogram was constructed by the ratios of the immunoprecipitated DNA to the input.



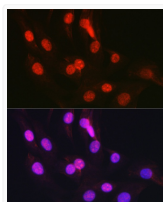
Immunoprecipitation analysis of 300 Mu g extracts of HeLa cells using 3 Mu g CTCF antibody (STJ23259). Western blot was performed from the immunoprecipitate using CTCF antibody (STJ23259) at a dilution of 1:500.



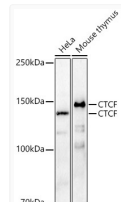
Immunofluorescence analysis of U2OS cells using CTCF Rabbit polyclonal antibody (STJ23259) at dilution of 1:50 (40x lens). Secondary antibody: Cy3 Goat Anti-Rabbit IgG (H+L) at 1:500 dilution. Blue: DAPI for nuclear staining.



Immunofluorescence analysis of PC-12 cells using CTCF Rabbit polyclonal antibody (STJ23259) at dilution of 1:50 (40x lens). Secondary antibody: Cy3 Goat Anti-Rabbit IgG (H+L) at 1:500 dilution. Blue: DAPI for nuclear staining.



Immunofluorescence analysis of NIH/3T3 cells using CTCF Rabbit polyclonal antibody (STJ23259) at dilution of 1:50 (40x lens). Secondary antibody: Cy3 Goat Anti-Rabbit IgG (H+L) at 1:500 dilution. Blue: DAPI for nuclear staining.



Western blot analysis of various lysates, using CTCF Rabbit polyclonal antibody (STJ23259) at 1:1000 dilution. Secondary antibody: HRP Goat Anti-Rabbit IgG (H+L) (STJS000856) at 1:10000 dilution. Lysates/proteins: 25ug per lane. Blocking buffer: 3% nonfat dry milk in TBST. Detection: ECL Basic Kit. Exposure time: 180s.