

## Anti-CST3 antibody (1-146) (STJ23251)

### GENERAL INFORMATION

Product Type	Primary antibodies
Applications	WB/IF/ICC/ELISA
Host / Source	Rabbit
Reactivity	Human/Mouse/Rat

### PRODUCT PROPERTIES

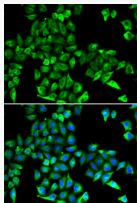
Clonality	Polyclonal
Concentration	Lot specific
Conjugation	Unconjugated
Purification	Affinity purification
Dilution Range	WB:1:500-1:2000 IF/CC:1:10-1:100 ELISA:Recommended starting concentration is 1 Mu g/mL. Please optimize the concentration based on your specific assay requirements.
Formulation	PBS with 0.02% Sodium Azide, 50% Glycerol, pH 7.3.
Isotype	IgG
Molecular Weight	Protein Mw: 13kDa Observed Mw: 13kDa
Storage Instruction	Store at -20°C for up to 1 year from the date of receipt, and avoid repeat freeze-thaw cycles.

### TARGET INFORMATION

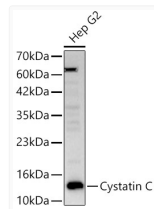
Gene ID	<a href="#">1471</a>
Gene Symbol	<a href="#">CST3</a>
UniProt ID	<a href="#">CYTC_HUMAN</a>
Immunogen Region	1-146
Immunogen Sequence	MAGPLRAPLLLLLAILAVALA VSPAAGSSPGKPPRLVGGPM DASVEEEGVRRALDFAVGEY NKASNDMYHSRALQVVRARK QIVAGVNYFLDVELGRTTCT KTQPNLDNCPFHQDQPHLKRK AFCSFQIYAVPWQGTMTLSK STCQDA
Specificity	Recombinant fusion protein containing a sequence corresponding to amino acids 1-146 of human Cystatin C (NP_000090.1).

### ADDITIONAL INFORMATION

Note **STRICTLY FOR FURTHER SCIENTIFIC RESEARCH USE ONLY (RUO). MUST NOT TO BE USED IN DIAGNOSTIC OR THERAPEUTIC APPLICATIONS.**



Immunofluorescence analysis of HeLa cells using Cystatin C antibody (STJ23251). Blue: DAPI for nuclear staining.



Western blot analysis of Hep G2, using Cystatin C Rabbit polyclonal antibody (STJ23251) at 1:700 dilution. Secondary antibody: HRP Goat Anti-Rabbit IgG (H+L) (STJS000856) at 1:10000 dilution. Lysates/proteins: 25ug per lane. Blocking buffer: 3% nonfat dry milk in TBST. Detection: ECL Basic Kit. Exposure time: 30s.