

Anti-CSH1 antibody (27-217) (STJ23239)

GENERAL INFORMATION

Product Type	Primary antibodies
Applications	IHC-P/ELISA
Host / Source	Rabbit
Reactivity	Human

PRODUCT PROPERTIES

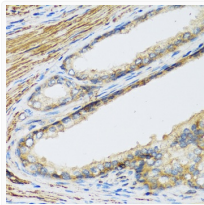
Clonality	Polyclonal
Concentration	Lot specific
Conjugation	Unconjugated
Purification	Affinity purification
Dilution Range	IHC-P:1:50-1:100 ELISA:Recommended starting concentration is 1 µg/mL. Please optimize the concentration based on your specific assay requirements.
Formulation	PBS with 0.02% Sodium Azide, 50% Glycerol, pH 7.3.
Isotype	IgG
Molecular Weight	Protein Mw: 25kDa Observed Mw:
Storage Instruction	Store at -20°C for up to 1 year from the date of receipt, and avoid repeat freeze-thaw cycles.

TARGET INFORMATION

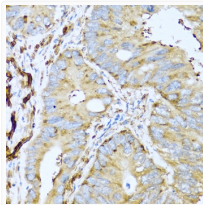
Gene ID	1442
Gene Symbol	CSH1
UniProt ID	CSH1_HUMAN
Immunogen Region	27-217
Immunogen Sequence	VQTVPLSRLFDHAMLQAHRA HQLAIDTYQEFEEYIPKDQ KYSFLHDSQTSFCFSDSIPT PSNMEETQQKSNLELLRISL LLIESWLEPVRFLRSMFANN LVYDTSDDYHLLKDLEEG IQTLMGRLEDGSRRTGQILK QTYSKFDTNSHNHDALLKNY GLLYCFRKDMDKVETFLRMV QCRSVEGSCGF
Specificity	Recombinant fusion protein containing a sequence corresponding to amino acids 27-217 of human Placental lactogen (Placental lactogen (CSH1)) (NP_001308.1).

ADDITIONAL INFORMATION

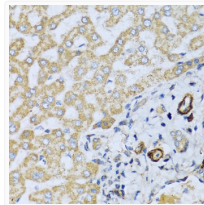
Note **STRICTLY FOR FURTHER SCIENTIFIC RESEARCH USE ONLY (RUO). MUST NOT TO BE USED IN DIAGNOSTIC OR THERAPEUTIC APPLICATIONS.**



Immunohistochemistry analysis of paraffin-embedded human prostate using Placental lactogen (Placental lactogen (CSH1)) antibody (STJ23239) at dilution of 1:100 (40x lens). Perform microwave antigen retrieval with 10 mM PBS buffer pH 7. 2 before commencing with immunohistochemistry staining protocol.



Immunohistochemistry analysis of paraffin-embedded human colon carcinoma using Placental lactogen (Placental lactogen (CSH1)) antibody (STJ23239) at dilution of 1:100 (40x lens). Perform microwave antigen retrieval with 10 mM PBS buffer pH 7. 2 before commencing with immunohistochemistry staining protocol.



Immunohistochemistry analysis of paraffin-embedded human liver using Placental lactogen (Placental lactogen (CSH1)) antibody (STJ23239) at dilution of 1:100 (40x lens). Perform microwave antigen retrieval with 10 mM PBS buffer pH 7. 2 before commencing with immunohistochemistry staining protocol.