

Anti-CRP antibody (100-200) (STJ23230)

GENERAL INFORMATION

Product Type	Primary antibodies
Applications	WB/IF/ICC/ELISA
Host / Source	Rabbit
Reactivity	Human/Mouse/Rat

PRODUCT PROPERTIES

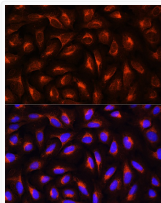
Clonality	Polyclonal
Concentration	Lot specific
Conjugation	Unconjugated
Purification	Affinity purification
Dilution Range	WB:1:500-1:2000 IF/CC:1:50-1:200 ELISA:Recommended starting concentration is 1 Mu g/mL. Please optimize the concentration based on your specific assay requirements.
Formulation	PBS with 0.09% Sodium Azide, 50% Glycerol, pH 7.3.
Isotype	IgG
Molecular Weight	Protein Mw: 23kDa Observed Mw: 25kDa
Storage Instruction	Store at -20°C for up to 1 year from the date of receipt, and avoid repeat freeze-thaw cycles.

TARGET INFORMATION

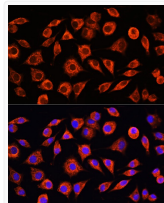
Gene ID	1401
Gene Symbol	CRP
UniProt ID	CRP_HUMAN
Immunogen Region	100-200
Immunogen Sequence	ILFEVPEVTVAPVHICTSWE SASGIVEFWVDGKPRVRKSL KKGVTGAEASILGQEQDS FGGNFEGSQSLVGDIGNVNM WDFVLSPEINTIYLGPPFS P
Specificity	A synthetic peptide corresponding to a sequence within amino acids 100-200 of human C-Reactive Protein (CRP) (NP_000558.2).

ADDITIONAL INFORMATION

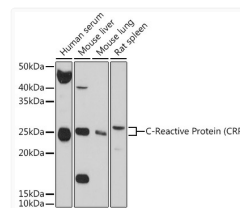
Note STRICTLY FOR FURTHER SCIENTIFIC RESEARCH USE ONLY (RUO). MUST NOT TO BE USED IN DIAGNOSTIC OR THERAPEUTIC APPLICATIONS.



Immunofluorescence analysis of U2OS cells using C-Reactive Protein (C-Reactive Protein (CRP)) Rabbit polyclonal antibody (STJ23230) at dilution of 1:100. Blue: DAPI for nuclear staining.



Immunofluorescence analysis of L929 cells using C-Reactive Protein (C-Reactive Protein (CRP)) Rabbit polyclonal antibody (STJ23230) at dilution of 1:100. Blue: DAPI for nuclear staining.



Western blot analysis of extracts of various cell lines, using C-Reactive Protein (C-Reactive Protein (CRP)) antibody (STJ23230) at 1:1000 dilution. Secondary antibody: HRP Goat Anti-Rabbit IgG (H+L) (STJS000856) at 1:10000 dilution. Lysates/proteins: 25 Mu g per lane. Blocking buffer: 3% nonfat dry milk in TBST. Detection: ECL Basic Kit. Exposure time: 90s.