

Anti-CPT2 antibody (420-658) (STJ23216)

GENERAL INFORMATION

Product Type	Primary antibodies
Applications	WB/IHC-P/ELISA
Host / Source	Rabbit
Reactivity	Human/Mouse/Rat

PRODUCT PROPERTIES

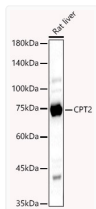
Clonality	Polyclonal
Concentration	Lot specific
Conjugation	Unconjugated
Purification	Affinity purification
Dilution Range	WB:1:100-1:500 IHC-P:1:50-1:200 ELISA:Recommended starting concentration is 1 Mu g/mL. Please optimize the concentration based on your specific assay requirements.
Formulation	PBS with 0.05% Proclin300, 50% Glycerol, pH 7.3.
Isotype	IgG
Molecular Weight	Protein Mw: 74kDa Observed Mw: 72kDa
Storage Instruction	Store at -20°C for up to 1 year from the date of receipt, and avoid repeat freeze-thaw cycles.

TARGET INFORMATION

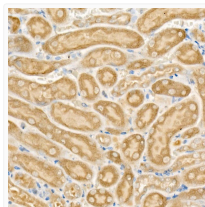
Gene ID	1376
Gene Symbol	CPT2
UniProt ID	CPT2_HUMAN
Immunogen Region	420-658
Immunogen Sequence	TDALKTGITAAKEKFDATMK TLTIDCVQFQRRGGKEFLKKQ KLSPDAVAQLAFQMAFLRQY GQTVATYESCSTA AFKHGRT ETIRPASVYTKRCSEAFVRE PSRHSAGELQQMMVECSKYH GQLTKEAAMGQGFDRHLFAL RHLAAAKGIILPELYLDPAY GQINHNVLSTLSSPAVNL GGFAPVSDGFGVGYAVHDN WIGCNVSSYPGRNAREFLQC VEKALEDMFDALEGKSIKS
Specificity	A synthetic peptide corresponding to a sequence within amino acids 420-658 of human CPT2 (NP_000089.1).

ADDITIONAL INFORMATION

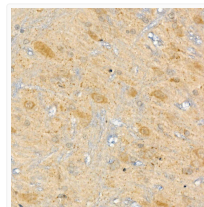
Note **STRICTLY FOR FURTHER SCIENTIFIC RESEARCH USE ONLY (RUO). MUST NOT TO BE USED IN DIAGNOSTIC OR THERAPEUTIC APPLICATIONS.**



Western blot analysis of Rat liver, using CPT2 antibody (STJ23216) at 1:500 dilution. Secondary antibody: HRP Goat Anti-rabbit IgG (H+L) (STJS000856) at 1:10000 dilution. Lysates/proteins: 25 Mu g per lane. Blocking buffer: 3% non-fat dry milk in TBST. Detection: ECL Basic Kit. Exposure time: 180s.



Immunohistochemistry analysis of paraffin-embedded mouse kidney using CPT2 rabbit polyclonal antibody (STJ23216) at dilution of 1:50 (40x lens). Perform high pressure antigen retrieval with 10 mM citrate buffer pH 6.0 before commencing with immunohistochemistry staining protocol.



Immunohistochemistry analysis of paraffin-embedded rat brain using CPT2 rabbit polyclonal antibody (STJ23216) at dilution of 1:50 (40x lens). Perform high pressure antigen retrieval with 10 mM citrate buffer pH 6.0 before commencing with immunohistochemistry staining protocol.