

## Anti-CLEC4D antibody (39-215) (STJ23168)

### GENERAL INFORMATION

Product Type	Primary antibodies
Applications	WB/IF/ICC/ELISA
Host / Source	Rabbit
Reactivity	Human/Mouse/Rat

### PRODUCT PROPERTIES

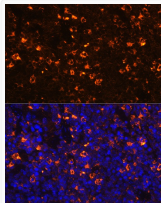
Clonality	Polyclonal
Concentration	Lot specific
Conjugation	Unconjugated
Purification	Affinity purification
Dilution Range	WB:1:1000-1:4000 IF/CC:1:50-1:200 ELISA:Recommended starting concentration is 1 $\mu$ g/mL. Please optimize the concentration based on your specific assay requirements.
Formulation	PBS with 0.09% Sodium Azide, 50% Glycerol, pH 7.3.
Isotype	IgG
Molecular Weight	Protein Mw: 25kDa Observed Mw: 27kDa
Storage Instruction	Store at -20°C for up to 1 year from the date of receipt, and avoid repeat freeze-thaw cycles.

### TARGET INFORMATION

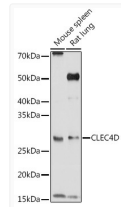
Gene ID	<a href="#">338339</a>
Gene Symbol	<a href="#">CLEC4D</a>
UniProt ID	<a href="#">CLC4D_HUMAN</a>
Immunogen Region	39-215
Immunogen Sequence	CLVTHHNFSRCKRGTGVHKL EHHAKLKCIKEKSELKSAEG STWNCCPIDWRAFQSNCFYP LTDNKTWAESERNCSGMGAH LMTISTEAQNFIQLDRR LSYFLGLRDNAGQWRWVD QTPFNPRRVFVHKNPEDNSQ GENCVLLVYNQDKAWNDVP CNFEASRICKIPGTTLN
Specificity	Recombinant fusion protein containing a sequence corresponding to amino acids 39-215 of human CLEC4D (NP_525126.2).

### ADDITIONAL INFORMATION

Note **STRICTLY FOR FURTHER SCIENTIFIC RESEARCH USE ONLY (RUO). MUST NOT TO BE USED IN DIAGNOSTIC OR THERAPEUTIC APPLICATIONS.**



Immunofluorescence analysis of mouse spleen using CLEC4D Rabbit polyclonal antibody (STJ23168) at dilution of 1:100 (40x lens). Blue: DAPI for nuclear staining.



Western blot analysis of extracts of various cell lines, using CLEC4D Rabbit polyclonal antibody (STJ23168) at 1:1000 dilution. Secondary antibody: HRP Goat Anti-Rabbit IgG (H+L) (STJS000856) at 1:10000 dilution. Lysates/proteins: 25  $\mu$ g per lane. Blocking buffer: 3% nonfat dry milk in TBST. Detection: ECL Basic Kit. Exposure time: 90s.