

Anti-CFB antibody (26-259) (STJ23103)

GENERAL INFORMATION

Product Type	Primary antibodies
Applications	WB/IHC-P/IF/ICC/ELISA
Host / Source	Rabbit
Reactivity	Human/Mouse/Rat

PRODUCT PROPERTIES

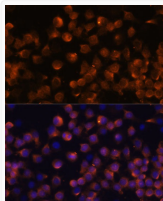
Clonality	Polyclonal
Concentration	Lot specific
Conjugation	Unconjugated
Purification	Affinity purification
Dilution Range	WB:1:500-1:1000 IHC-P:1:50-1:200 IF/CC:1:50-1:200 ELISA:Recommended starting concentration is 1 Mu g/mL. Please optimize the concentration based on your specific assay requirements.
Formulation	PBS with 0.01% Thimerosal, 50% Glycerol, pH 7.3.
Isotype	IgG
Molecular Weight	Protein Mw: 86kDa Observed Mw: 100kDa
Storage Instruction	Store at -20°C for up to 1 year from the date of receipt, and avoid repeat freeze-thaw cycles.

TARGET INFORMATION

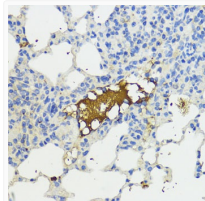
Gene ID	629
Gene Symbol	CFB
UniProt ID	CFAB_HUMAN
Immunogen Region	26-259
Immunogen Sequence	TPWSLARPQGSCSLEGVEIK GGSFRLLEQEGQALEYVCPSPG FYPYPVQTRTCRSTGWSWSTL KTQDQKTVRKAECRAIHCPH PHDFENGEYWPRSPYNNVSD EISFHCYDGYTLRGSANRTC QVNGRWSSGQTAICDNGAGYC SNPGPIGTRKVGSGYRLED SVTYHCSRGLTLRGSQRRTC QEGGSWSGTEPSCQDSFMYD TPQEVAAEFLSLTETIEGV DAEDGHGPGEQQR
Specificity	Recombinant fusion protein containing a sequence corresponding to amino acids 26-259 of Complement factor B (CFB) (NP_001701.2).

ADDITIONAL INFORMATION

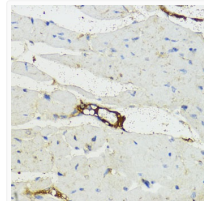
Note **STRICTLY FOR FURTHER SCIENTIFIC RESEARCH USE ONLY (RUO). MUST NOT TO BE USED IN DIAGNOSTIC OR THERAPEUTIC APPLICATIONS.**



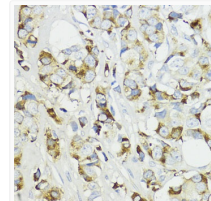
Immunofluorescence analysis of Raw264.7 cells using Complement factor B (CFB) Rabbit polyclonal antibody (STJ23103) at dilution of 1:100 (40x lens). Secondary antibody: Cy3 Goat Anti-Rabbit IgG (H+L) at 1:500 dilution. Blue: DAPI for nuclear staining.



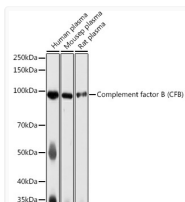
Immunohistochemistry analysis of Complement factor B (CFB) in paraffin-embedded mouse lung using Complement factor B (CFB) Rabbit polyclonal antibody (STJ23103) at dilution of 1:200 (40x lens). Perform microwave antigen retrieval with 10 mM PBS buffer pH 7.2 before commencing with immunohistochemistry staining protocol.



Immunohistochemistry analysis of Complement factor B (CFB) in paraffin-embedded mouse heart using Complement factor B (CFB) Rabbit polyclonal antibody (STJ23103) at dilution of 1:200 (40x lens). Perform microwave antigen retrieval with 10 mM PBS buffer pH 7.2 before commencing with immunohistochemistry staining protocol.



Immunohistochemistry analysis of Complement factor B (CFB) in paraffin-embedded human mammary cancer using Complement factor B (CFB) Rabbit polyclonal antibody (STJ23103) at dilution of 1:200 (40x lens). Perform microwave antigen retrieval with 10 mM PBS buffer pH 7.2 before commencing with immunohistochemistry staining protocol.



Western blot analysis of various lysates using Complement factor B (CFB) Rabbit polyclonal antibody (STJ23103) at 1:1000 dilution. Secondary antibody: HRP Goat Anti-Rabbit IgG (H+L) (STJS000856) at 1:10000 dilution. Lysates/proteins: 25 Mu g per lane. Blocking buffer: 3% nonfat dry milk in TBST. Detection: ECL Basic Kit. Exposure time: 1s.