

Anti-CD8B antibody (22-170) (STJ23016)

GENERAL INFORMATION

Product Type	Primary antibodies
Applications	WB/ELISA
Host / Source	Rabbit
Reactivity	Human/Mouse/Rat

PRODUCT PROPERTIES

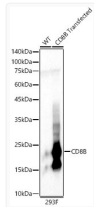
Clonality	Polyclonal
Concentration	Lot specific
Conjugation	Unconjugated
Purification	Affinity purification
Dilution Range	WB:1:500-1:2000 ELISA:Recommended starting concentration is 1 μ g/mL. Please optimize the concentration based on your specific assay requirements.
Formulation	PBS with 0.02% Sodium Azide, 50% Glycerol, pH 7.3.
Isotype	IgG
Molecular Weight	Protein Mw: 24kDa Observed Mw: 23kDa
Storage Instruction	Store at -20°C for up to 1 year from the date of receipt, and avoid repeat freeze-thaw cycles.

TARGET INFORMATION

Gene ID	926
Gene Symbol	CD8B
UniProt ID	CD8B_HUMAN
Immunogen Region	22-170
Immunogen Sequence	LQQTPAYIKVQTNKVMVLSL EAKISLSNMRIYWLRQRQAP SSDSHHEFLALWDSAKGTIH GEEVEQEKIIVFRDASRFIL NLTSVKPEDSGIYFCMIVGS PELTFGKGTQLSVVDFLPTT AQPTKKSTLKKRVCRLPRPE TQKGPLCSP
Specificity	Recombinant fusion protein containing a sequence corresponding to amino acids 22-170 of human CD8B (NP_757362.1).

ADDITIONAL INFORMATION

Note STRICTLY FOR FURTHER SCIENTIFIC RESEARCH USE ONLY (RUO). MUST NOT TO BE USED IN DIAGNOSTIC OR THERAPEUTIC APPLICATIONS.



Western blot analysis of lysates from wild type (WT) and 293F cells transfected with CD8B using CD8B Rabbit polyclonal antibody (STJ23016) at 1:500 dilution. Secondary antibody: HRP Goat Anti-Rabbit IgG (H+L) (STJS000856) at 1:10000 dilution. Lysates/proteins: 25 μ g per lane. Blocking buffer: 3% nonfat dry milk in TBST. Detection: ECL Basic Kit. Exposure time: 10s.