

Anti-CD55 antibody (40-300) (STJ23005)

GENERAL INFORMATION

Product Type	Primary antibodies
Applications	WB/IF/ICC/ELISA
Host / Source	Rabbit
Reactivity	Human/Mouse/Rat

PRODUCT PROPERTIES

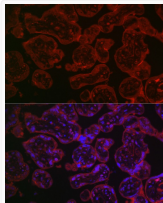
Clonality	Polyclonal
Concentration	Lot specific
Conjugation	Unconjugated
Purification	Affinity purification
Dilution Range	WB:1:500-1:1000 IF/ICC:1:50-1:200 ELISA:Recommended starting concentration is 1 Mu g/mL. Please optimize the concentration based on your specific assay requirements.
Formulation	PBS with 0.05% Proclin300, 50% Glycerol, pH7.3.
Isotype	IgG
Molecular Weight	Protein Mw: 41kDa Observed Mw: 60-70kDa
Storage Instruction	Store at -20°C for up to 1 year from the date of receipt, and avoid repeat freeze-thaw cycles.

TARGET INFORMATION

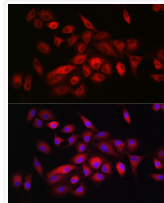
Gene ID	1604
Gene Symbol	CD55
UniProt ID	DAF_HUMAN
Immunogen Region	40-300
Immunogen Sequence	PDVPAQPALEGRTSFPEDT VITYKCEESFVKIPGEKDSV ICLKGSQWSDIEEFCNRSC E VPTRLNSASLKQPYITQNYF PVGTVVEYECRPGYRREPSL SPKLTCLQNLKWSTAVEFCK KKSCPNGEIRNGQIDVPGG ILFGATISFCNTGYKLFGS TSSFCLISGSSVQWSDPLPE CREIYCPAPPQIDNGIIQGE RDHYGYRQSVTYACNKGFTM IGEHSIYCTVNNDEGEWWSG
Specificity	Recombinant fusion protein containing a sequence corresponding to amino acids 40-300 of human CD55 (NP_000565.1).

ADDITIONAL INFORMATION

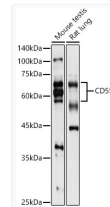
Note STRICTLY FOR FURTHER SCIENTIFIC RESEARCH USE ONLY (RUO). MUST NOT TO BE USED IN DIAGNOSTIC OR THERAPEUTIC APPLICATIONS.



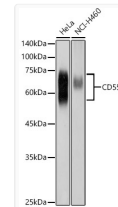
Immunofluorescence analysis of paraffin-embedded human placenta using CD55 Rabbit pAb1 (STJ23005) at dilution of 1:100 (40x lens). Secondary antibody: Cy3 Goat Anti-Rabbit IgG (H+L) at 1:500 dilution. Blue: DAPI for nuclear staining.



Immunofluorescence analysis of A-549 cells using CD55 Rabbit pAb1 (STJ23005) at dilution of 1:100 (40x lens). Secondary antibody: Cy3 Goat Anti-Rabbit IgG (H+L) at 1:500 dilution. Blue: DAPI for nuclear staining.



Western blot analysis of various lysates using CD55 Rabbit polyclonal antibody (STJ23005) at 1:1000 dilution. Secondary antibody: HRP Goat Anti-Rabbit IgG (H+L) (STJS000856) at 1:10000 dilution. Lysates/proteins: 25 Mu g per lane. Blocking buffer: 3% nonfat dry milk in TBST. Detection: ECL Basic Kit. Exposure time: 30s.



Western blot analysis of various lysates using CD55 Rabbit polyclonal antibody (STJ23005) at 1:1000 dilution. Secondary antibody: HRP Goat Anti-Rabbit IgG (H+L) (STJS000856) at 1:10000 dilution. Lysates/proteins: 25 Mu g per lane. Blocking buffer: 3% nonfat dry milk in TBST. Detection: ECL Basic Kit. Exposure time: 1s.