

## Anti-CD46 antibody (40-320) (STJ23003)

### GENERAL INFORMATION

Product Type	Primary antibodies
Applications	WB/IHC-P/IF/ICC/ELISA
Host / Source	Rabbit
Reactivity	Human/Mouse/Rat

### PRODUCT PROPERTIES

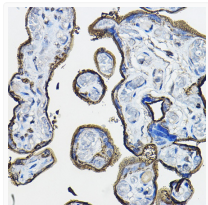
Clonality	Polyclonal
Concentration	Lot specific
Conjugation	Unconjugated
Purification	Affinity purification
Dilution Range	WB:1:500-1:1000 IHC-P:1:50-1:200 IF/CC:1:50-1:200 ELISA:Recommended starting concentration is 1 µg/mL. Please optimize the concentration based on your specific assay requirements.
Formulation	PBS with 0.05% Proclin300, 50% Glycerol, pH 7.3.
Isotype	IgG
Molecular Weight	Protein Mw: 44kDa Observed Mw: 50-70kDa
Storage Instruction	Store at -20°C for up to 1 year from the date of receipt, and avoid repeat freeze-thaw cycles.

### TARGET INFORMATION

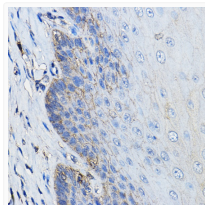
Gene ID	<a href="#">4179</a>
Gene Symbol	<a href="#">CD46</a>
UniProt ID	<a href="#">MCP_HUMAN</a>
Immunogen Region	40-320
Immunogen Sequence	TFEAMELIGKPKPYEIGER VDYKCKKGYFYIPPLATHTI CDRNHTWLPVSDDACYRET PYIRDPLNGQAVPANGTYEF GYQMHFICNEGYLLIGEEIL YCELKGSVAIWGKPPICEK VLCTPPPKIKNGKHTFSEVE VFEYLDAVTYSCDPAPGPD P FSLIGESTIYCGDNSVWSRA APECKVVKCRFPVVENGGKI SGFGKKFYKATVMFECDKG FYLDGSDTIVCDSNSTWDP
Specificity	Recombinant fusion protein containing a sequence corresponding to amino acids 40-320 of human CD46 (NP_722548.1).

### ADDITIONAL INFORMATION

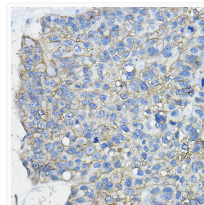
Note STRICTLY FOR FURTHER SCIENTIFIC RESEARCH USE ONLY (RUO). MUST NOT TO BE USED IN DIAGNOSTIC OR THERAPEUTIC APPLICATIONS.



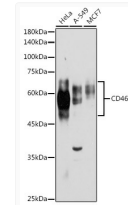
Immunohistochemistry analysis of paraffin-embedded human placenta using CD46 Rabbit polyclonal antibody (STJ23003) at dilution of 1:100 (40x lens). Perform high pressure antigen retrieval with 10 mM citrate buffer pH 6.0 before commencing with immunohistochemistry staining protocol.



Immunohistochemistry analysis of paraffin-embedded human esophagus using CD46 Rabbit polyclonal antibody (STJ23003) at dilution of 1:100 (40x lens). Perform high pressure antigen retrieval with 10 mM citrate buffer pH 6.0 before commencing with immunohistochemistry staining protocol.



Immunohistochemistry analysis of paraffin-embedded human lung cancer using CD46 Rabbit polyclonal antibody (STJ23003) at dilution of 1:100 (40x lens). Perform high pressure antigen retrieval with 10 mM citrate buffer pH 6.0 before commencing with immunohistochemistry staining protocol.



Western blot analysis of extracts of various cell lines, using CD46 antibody (STJ23003) at 1:1000 dilution. Secondary antibody: HRP Goat Anti-Rabbit IgG (H+L) (STJS000856) at 1:10000 dilution. Lysates/proteins: 25 µg per lane. Blocking buffer: 3% nonfat dry milk in TBST. Detection: ECL Basic Kit. Exposure time: 30s.