

## Anti-CD1D antibody (20-190) (STJ22977)

### GENERAL INFORMATION

Product Type	Primary antibodies
Applications	WB/IF/ICC/ELISA
Host / Source	Rabbit
Reactivity	Human/Mouse

### PRODUCT PROPERTIES

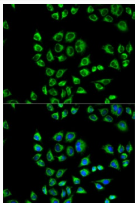
Clonality	Polyclonal
Concentration	Lot specific
Conjugation	Unconjugated
Purification	Affinity purification
Dilution Range	WB:1:500-1:1000 IF/CC:1:50-1:200 ELISA:Recommended starting concentration is 1 Mu g/mL. Please optimize the concentration based on your specific assay requirements.
Formulation	PBS with 0.09% Sodium Azide, 50% Glycerol, pH7.3.
Isotype	IgG
Molecular Weight	Protein Mw: 38kDa Observed Mw: 38kDa/50kDa
Storage Instruction	Store at -20°C for up to 1 year from the date of receipt, and avoid repeat freeze-thaw cycles.

### TARGET INFORMATION

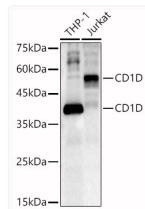
Gene ID	<a href="#">912</a>
Gene Symbol	<a href="#">CD1D</a>
UniProt ID	<a href="#">CD1D_HUMAN</a>
Immunogen Region	20-190
Immunogen Sequence	EVPQRLFPLRCLQISSFANS SWTRTDGLAWLGELQTHSWS NDSDTVRSCLKPWSQGTFSQDQ QWETLQHIFRVYRSSFTRDV KEFAKMLRLSYPLELQVSAG CEVHPGNASNNFFHVAFAQGK DILSFQGTWEPTQEAPLWV NLAIQVLNQDKWRETQVQL LNGTCPQFVSG
Specificity	Recombinant fusion protein containing a sequence corresponding to amino acids 20-190 of human CD1D (NP_001757.1).

### ADDITIONAL INFORMATION

Note STRICTLY FOR FURTHER SCIENTIFIC RESEARCH USE ONLY (RUO). MUST NOT TO BE USED IN DIAGNOSTIC OR THERAPEUTIC APPLICATIONS.



Immunofluorescence analysis of HeLa cells using CD1D Rabbit polyclonal antibody (STJ22977). Secondary antibody: Cy3 Goat Anti-Rabbit IgG (H+L) at 1:500 dilution. Blue: DAPI for nuclear staining.



Western blot analysis of various lysates, using CD1D Rabbit polyclonal antibody (STJ22977) at 1:1000 dilution. Secondary antibody: HRP Goat Anti-Rabbit IgG (H+L) (STJS000856) at 1:10000 dilution. Lysates/proteins: 25 Mu g per lane. Blocking buffer: 3% nonfat dry milk in TBST. Detection: ECL Basic Kit. Exposure time: 60s.